

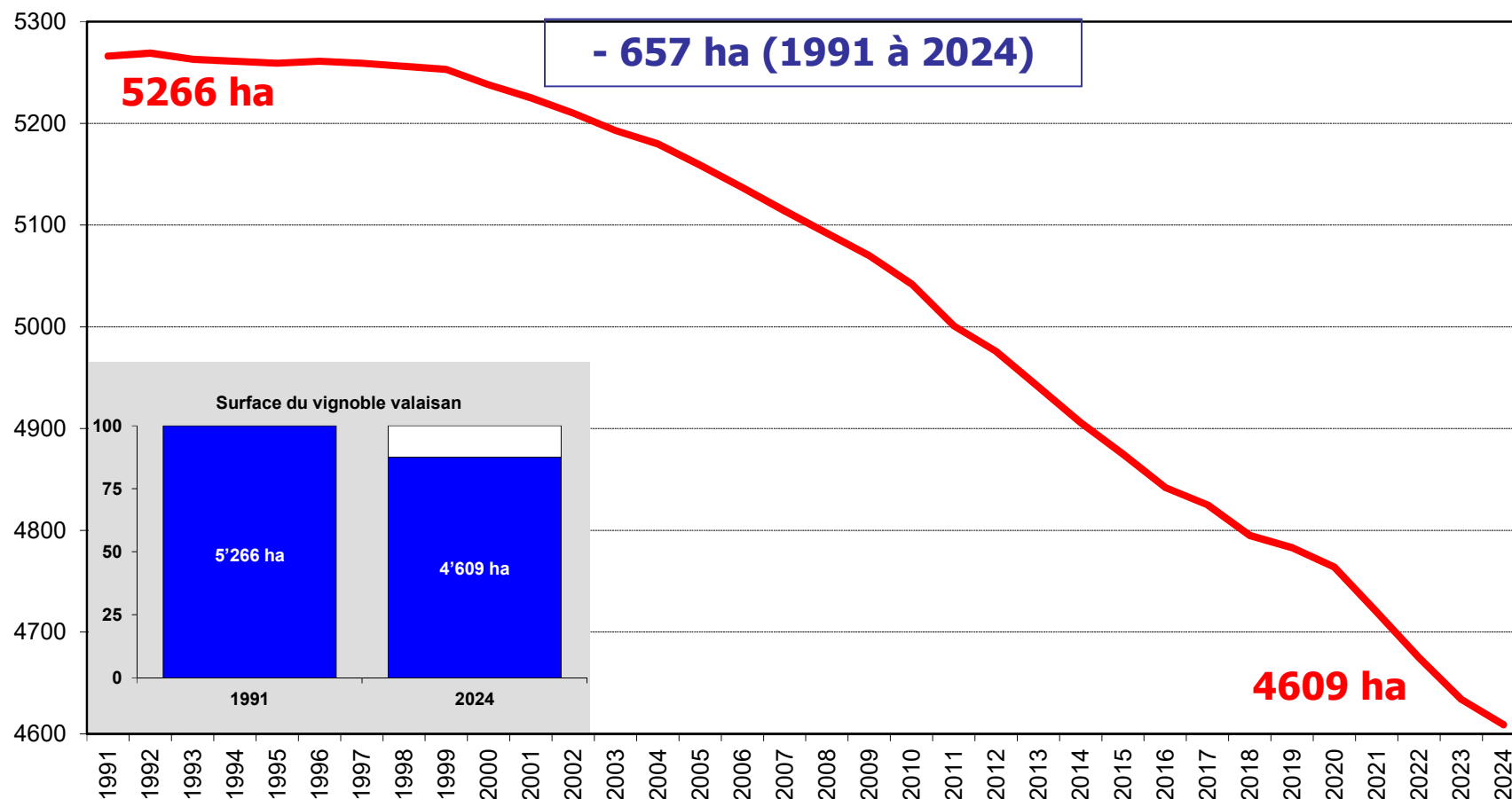
Situation et évolution de l'encépagement du vignoble valaisan

Office de la vigne et du vin
Registre des vignes au 31 décembre 2024

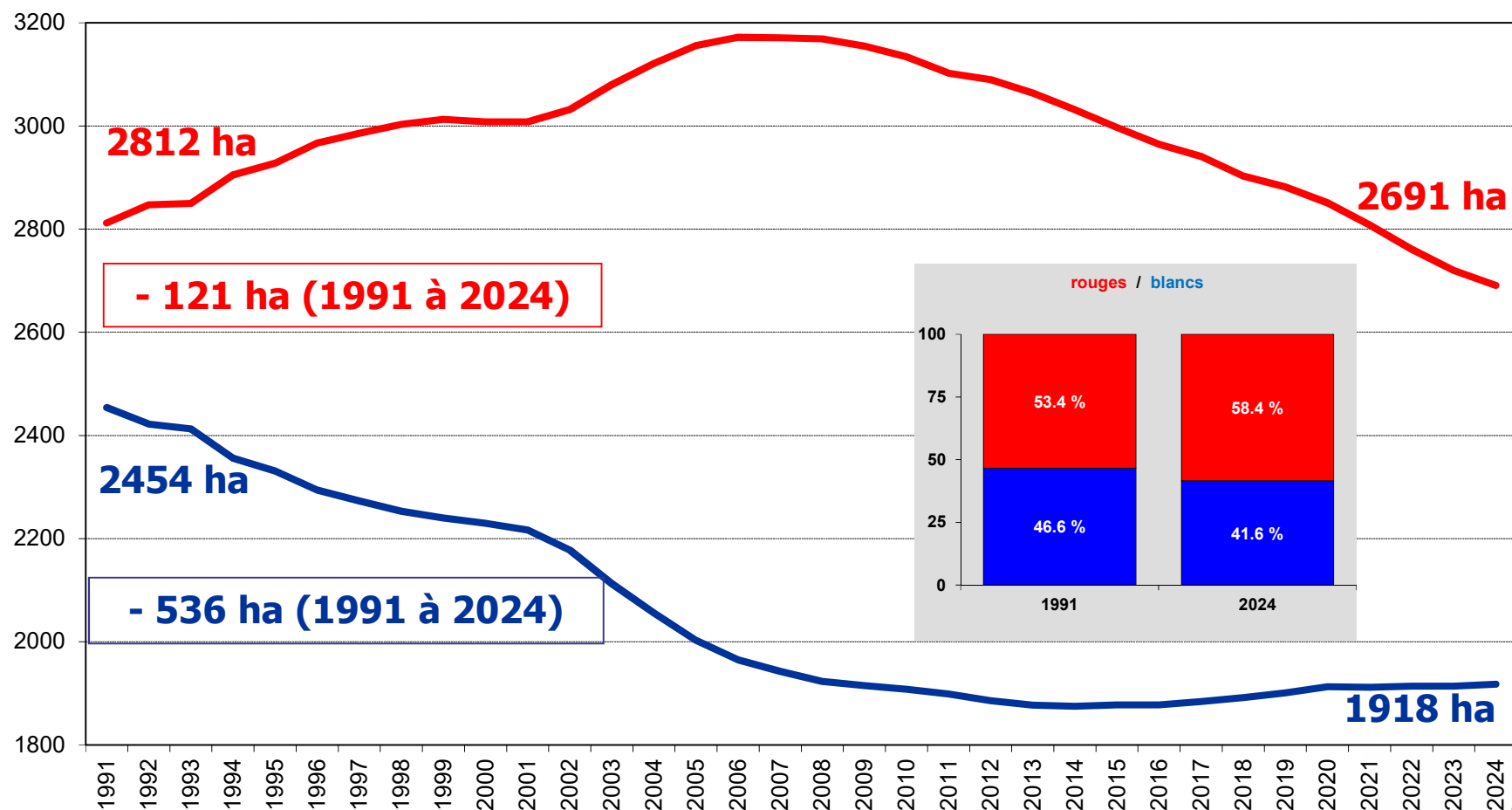
Le vignoble valaisan

- Le vignoble valaisan entre 1991 et 2024 (folio 3 à 5)
- Rythme de renouvellement du vignoble (folio 6)
- Les trois principaux cépages (folio 7 à 14)
- Les cépages autochtones (folio 15 à 22)
- Les « autres cépages » (folio 23 à 38)
- Tableau synoptique (folio 39)

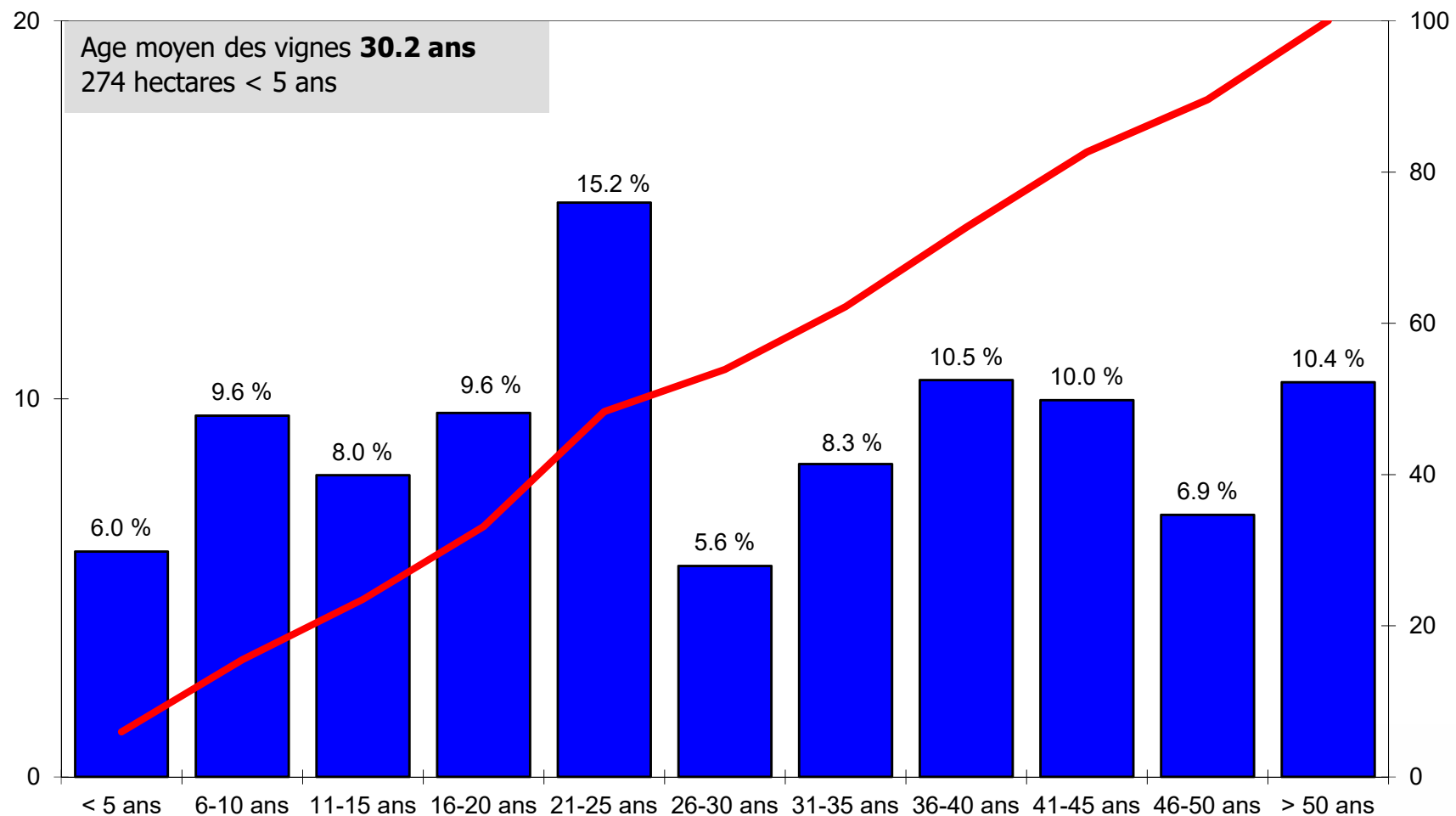
Evolution de la surface totale du vignoble valaisan



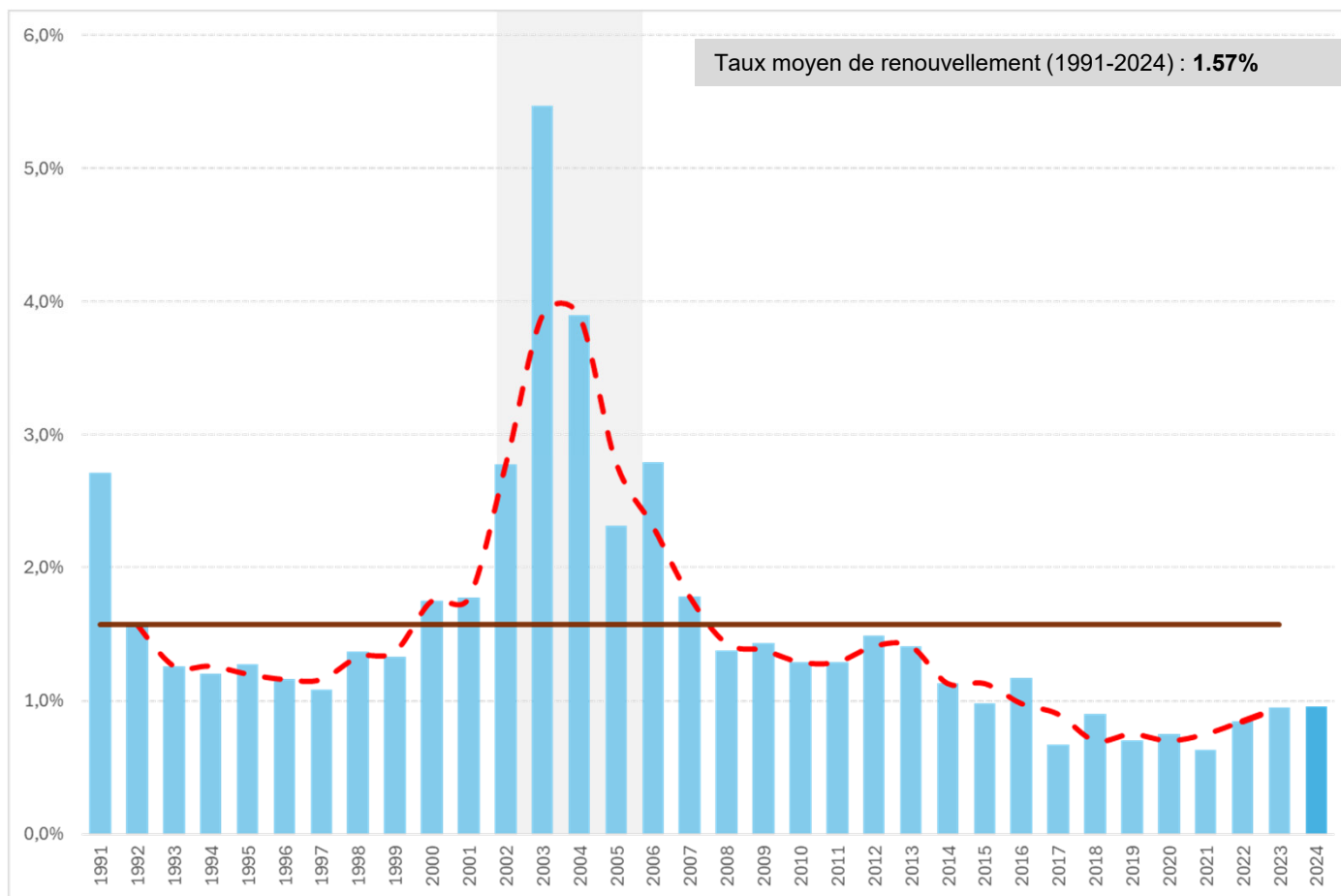
Evolution de la surface des cépages rouges et blancs du vignoble valaisan



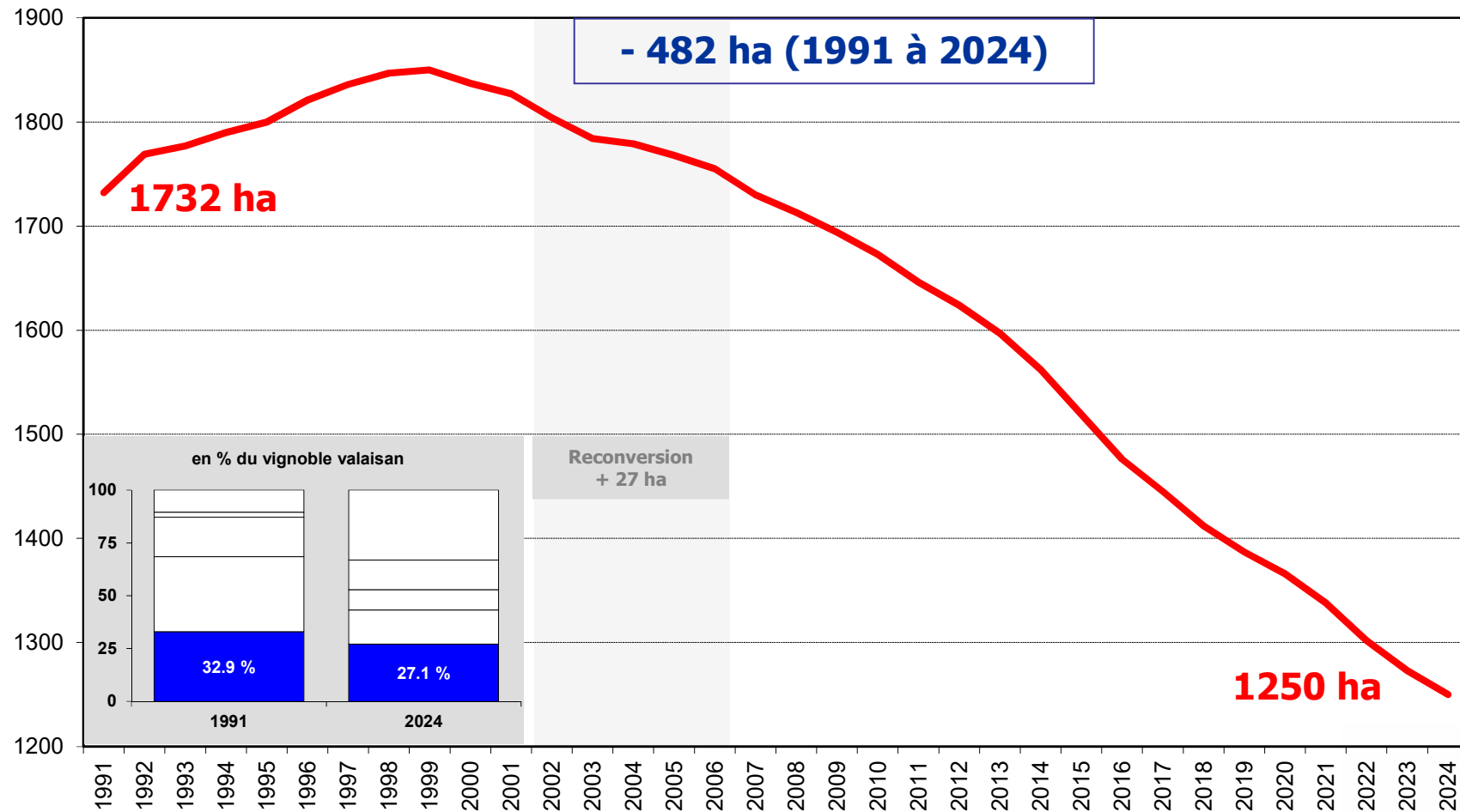
Structure d'âge du vignoble valaisan (par classe de 5 ans)



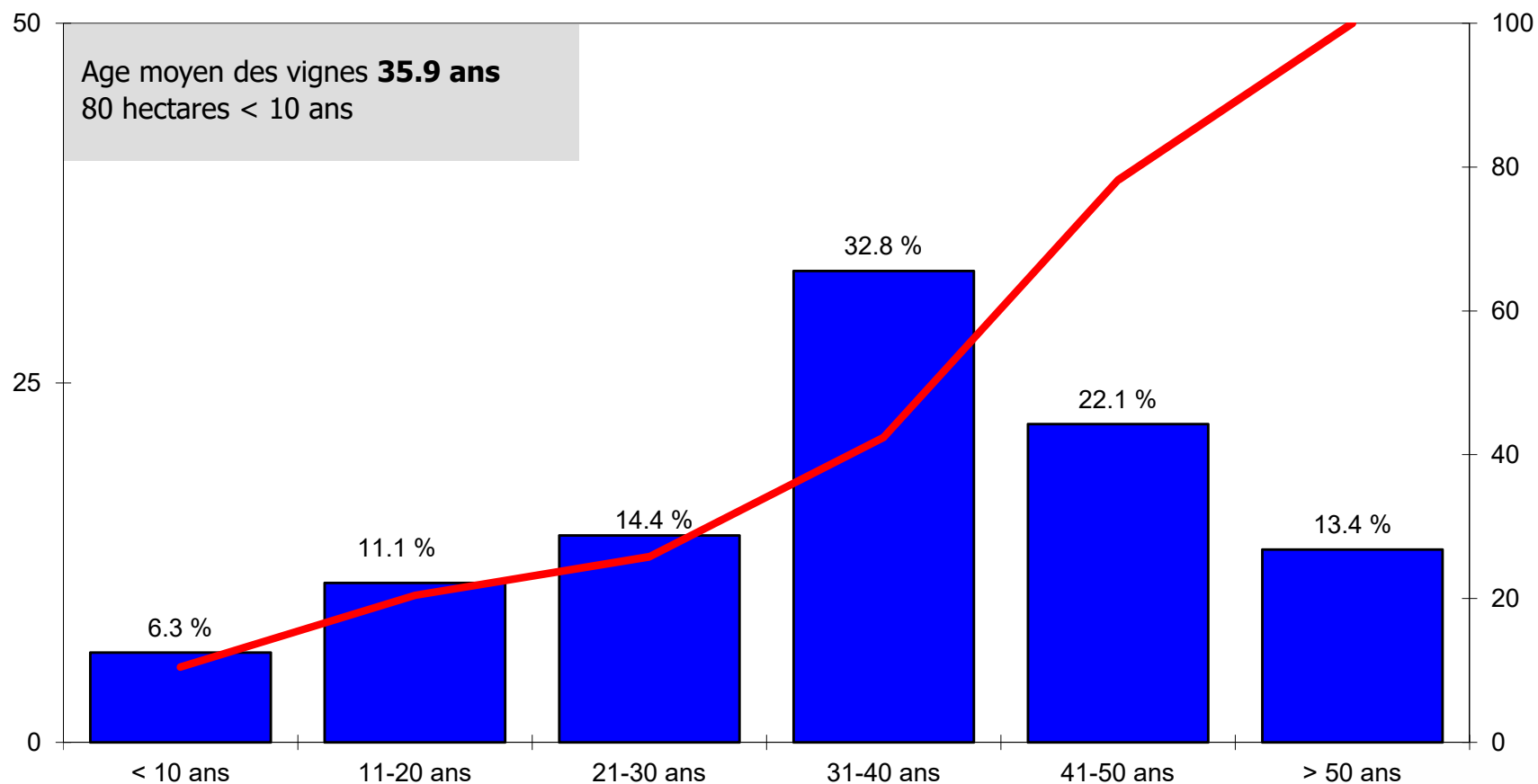
Rythme de renouvellement du vignoble



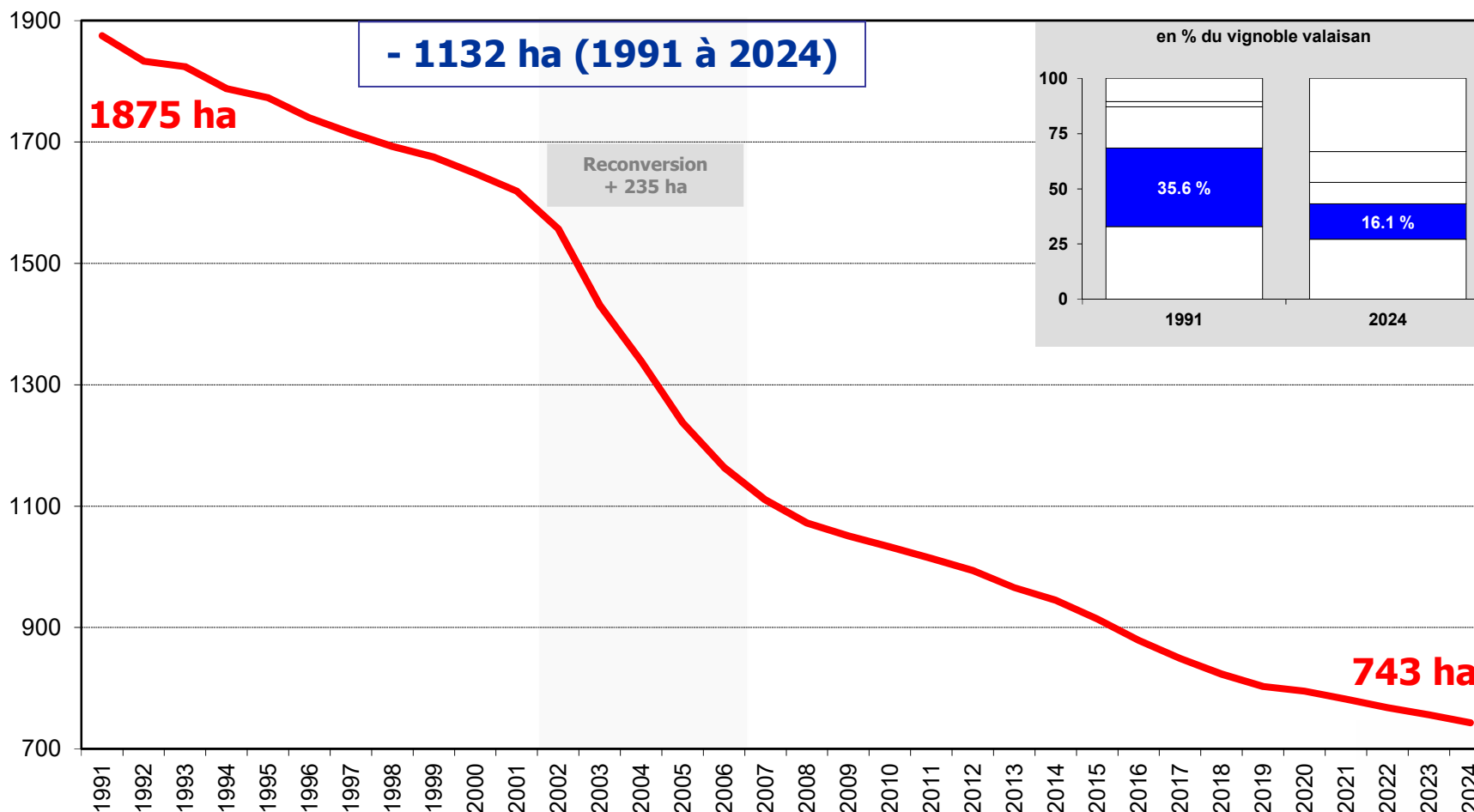
Evolution de la surface de pinot noir



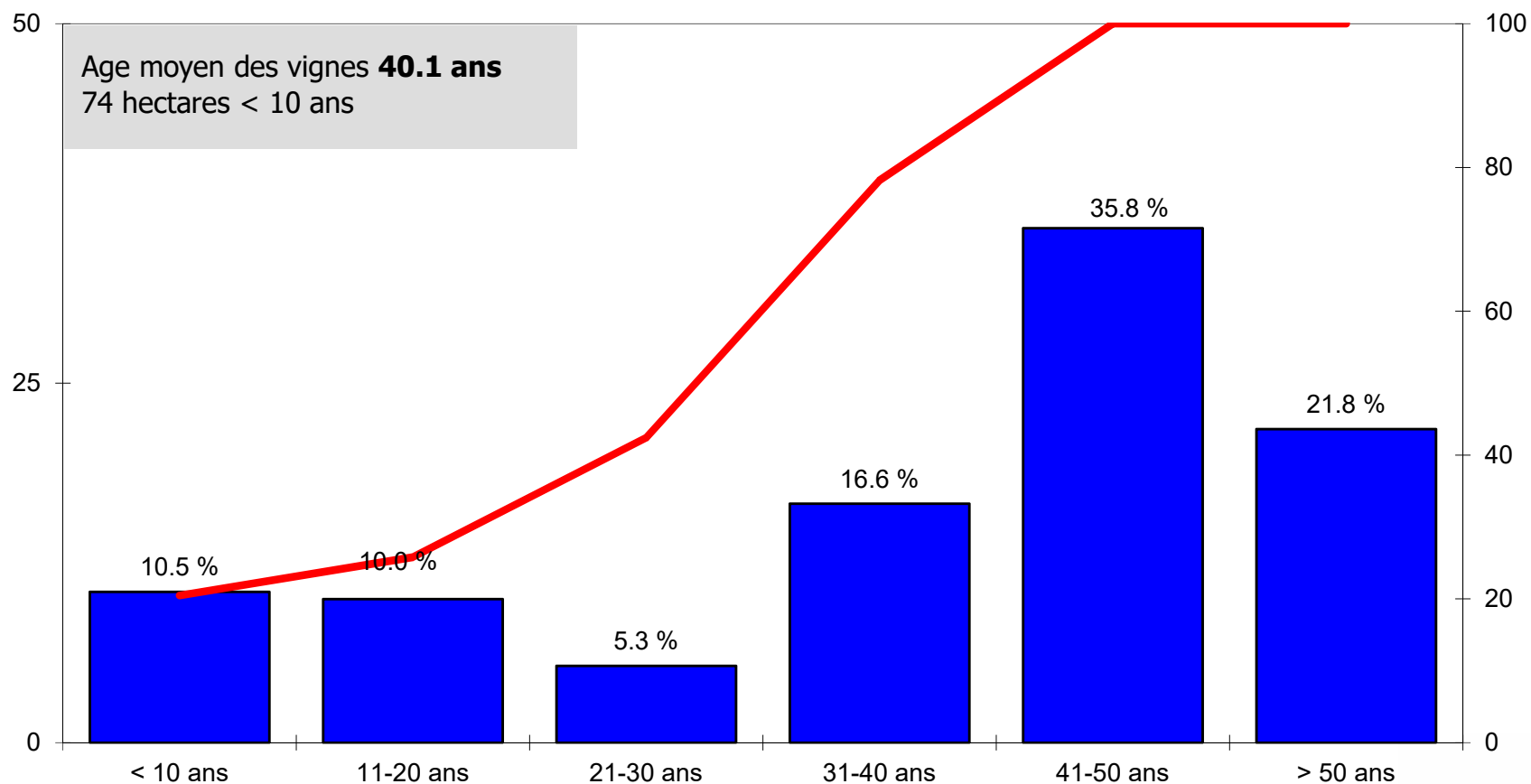
Structure d'âge du pinot noir



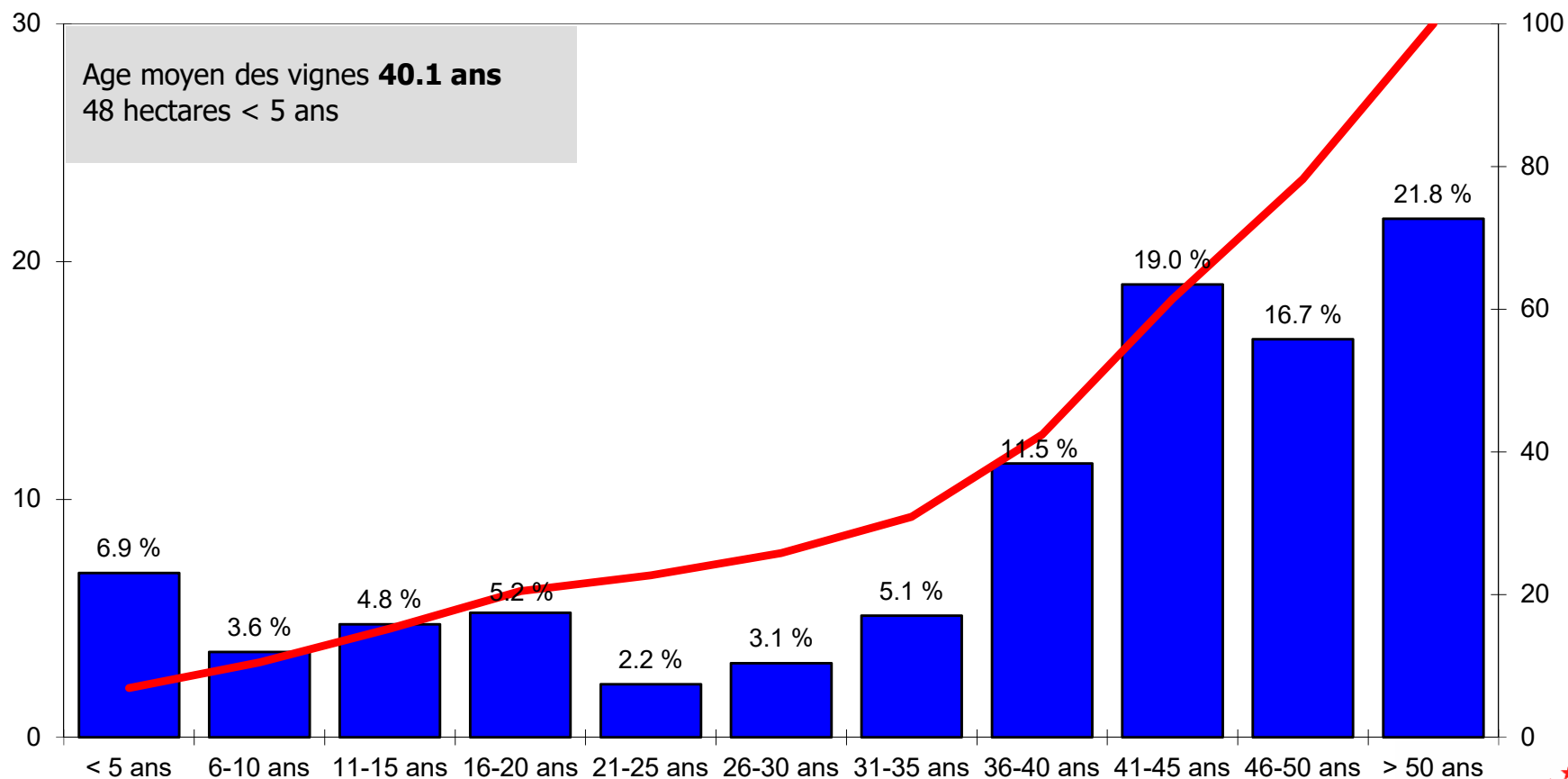
Evolution de la surface de chasselas



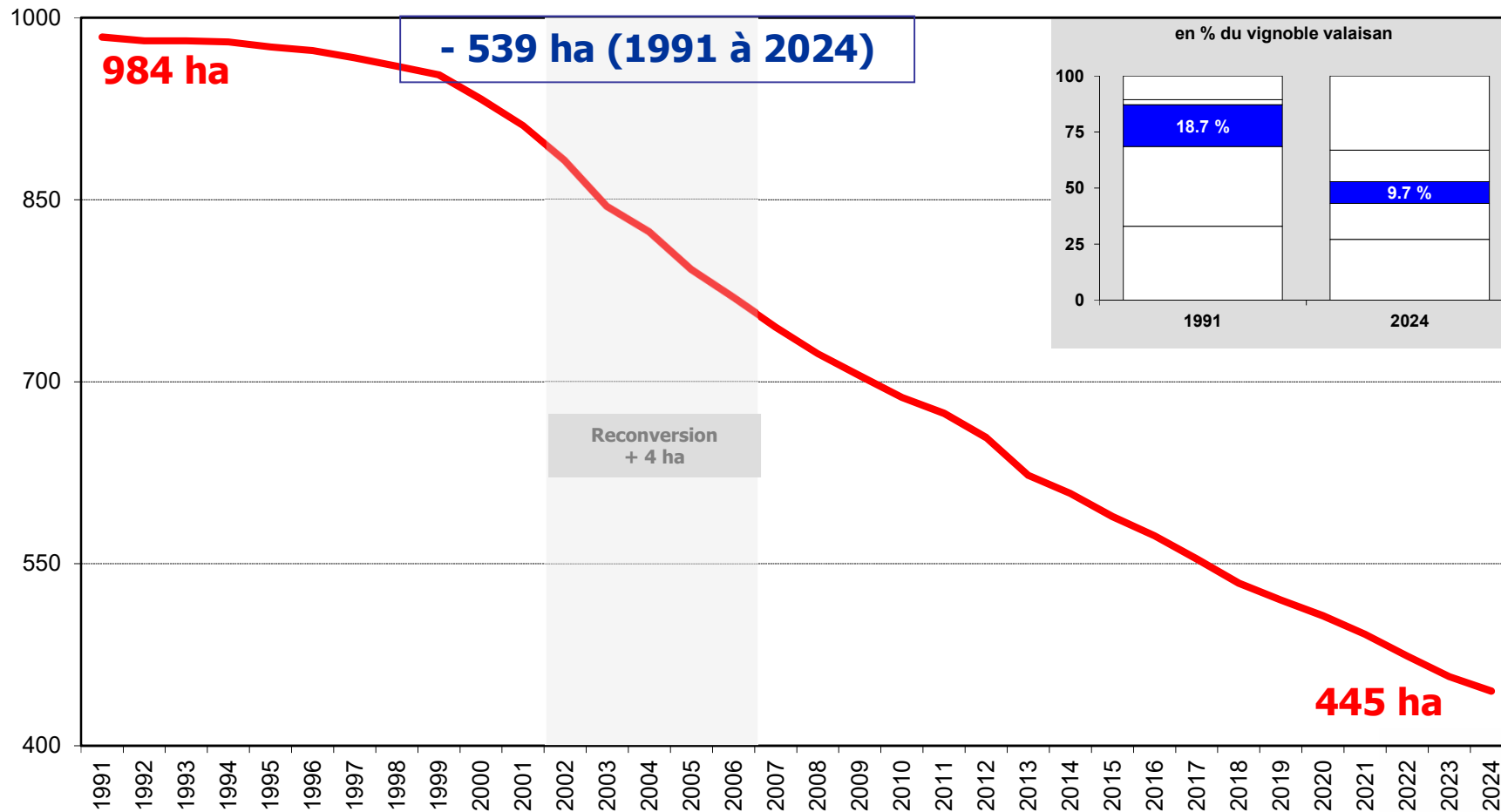
Structure d'âge du chasselas (par classe de 10 ans)



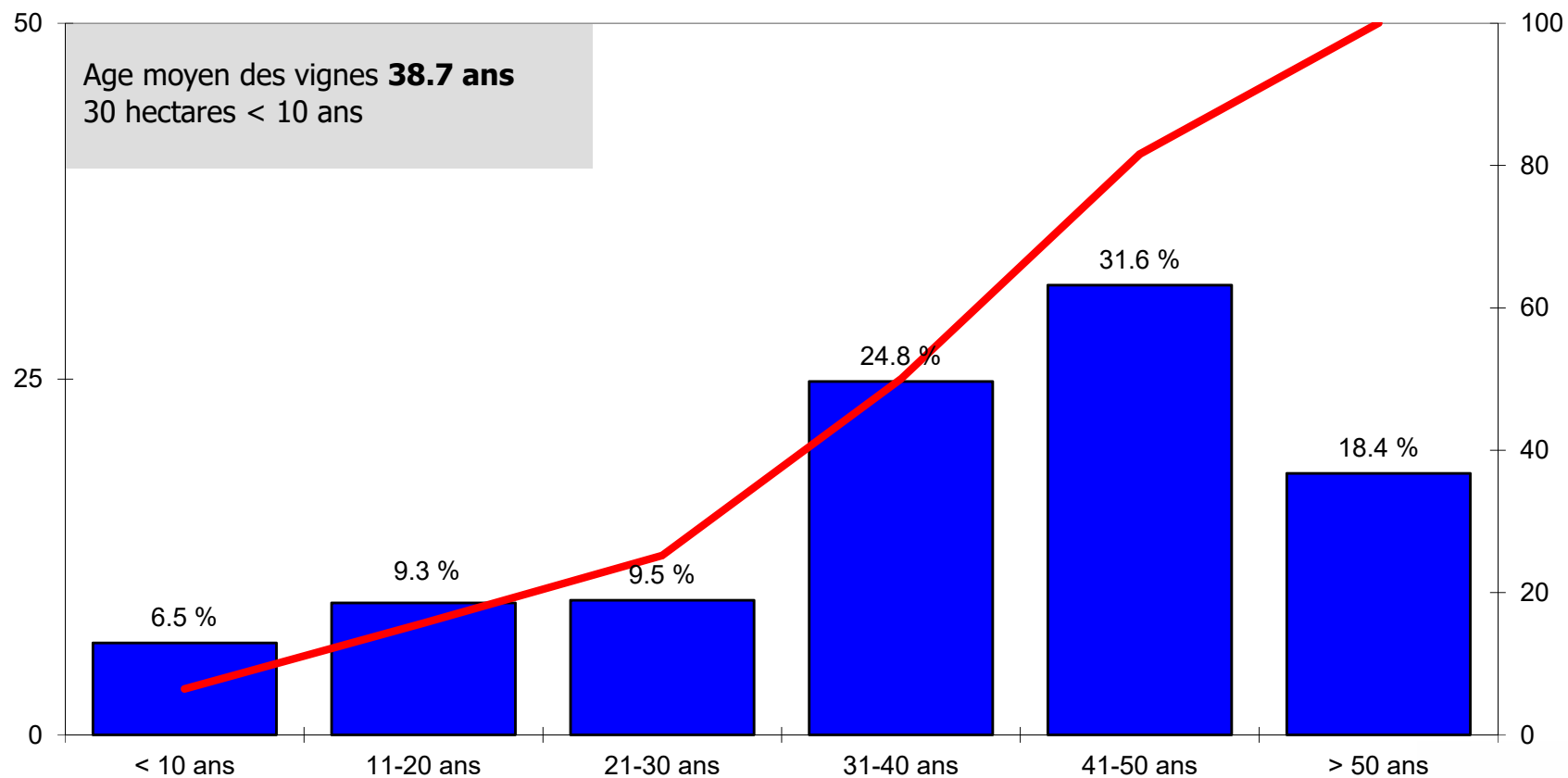
Structure d'âge du chasselas (par classe de 5 ans)



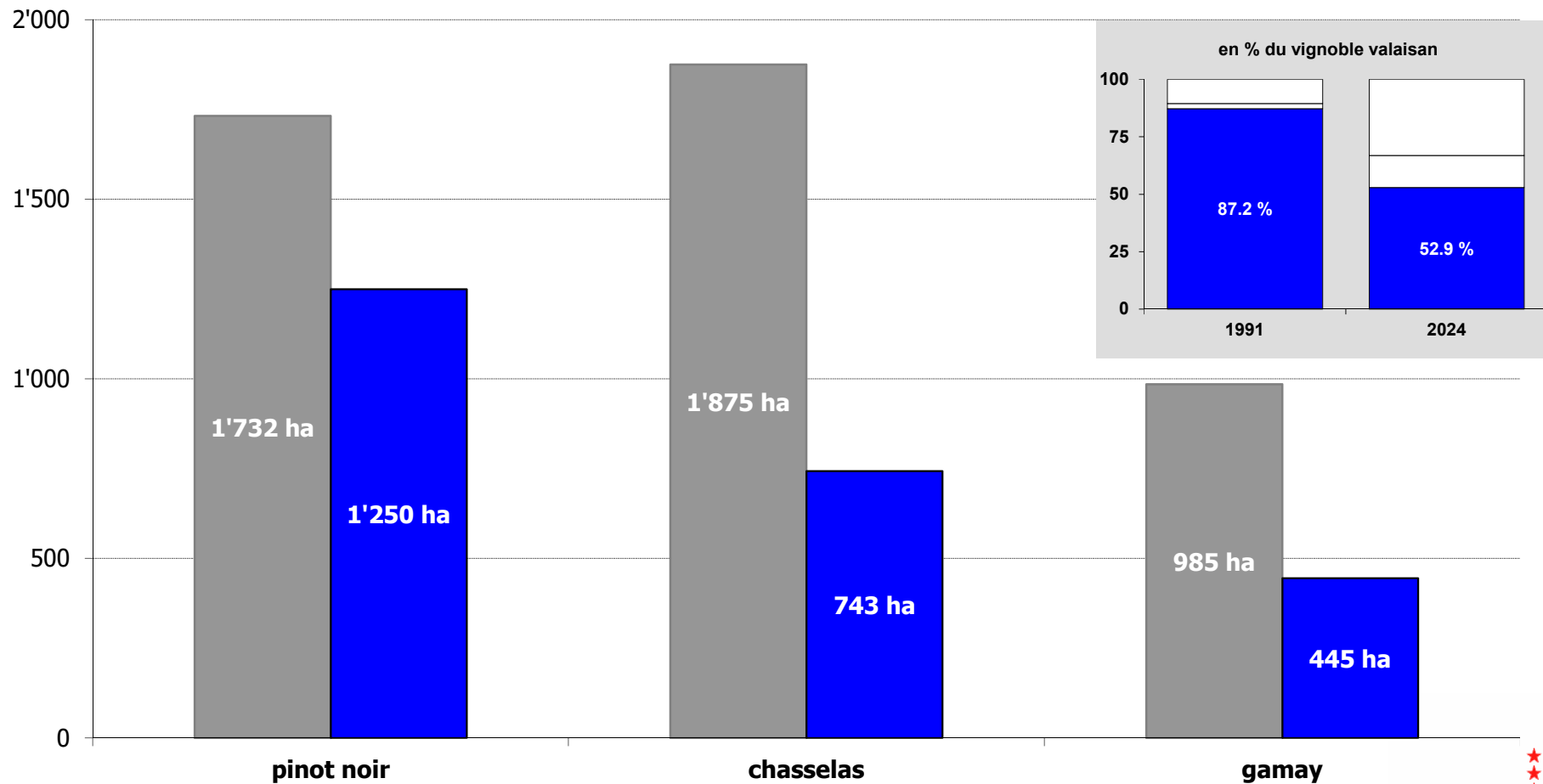
Evolution de la surface de gamay



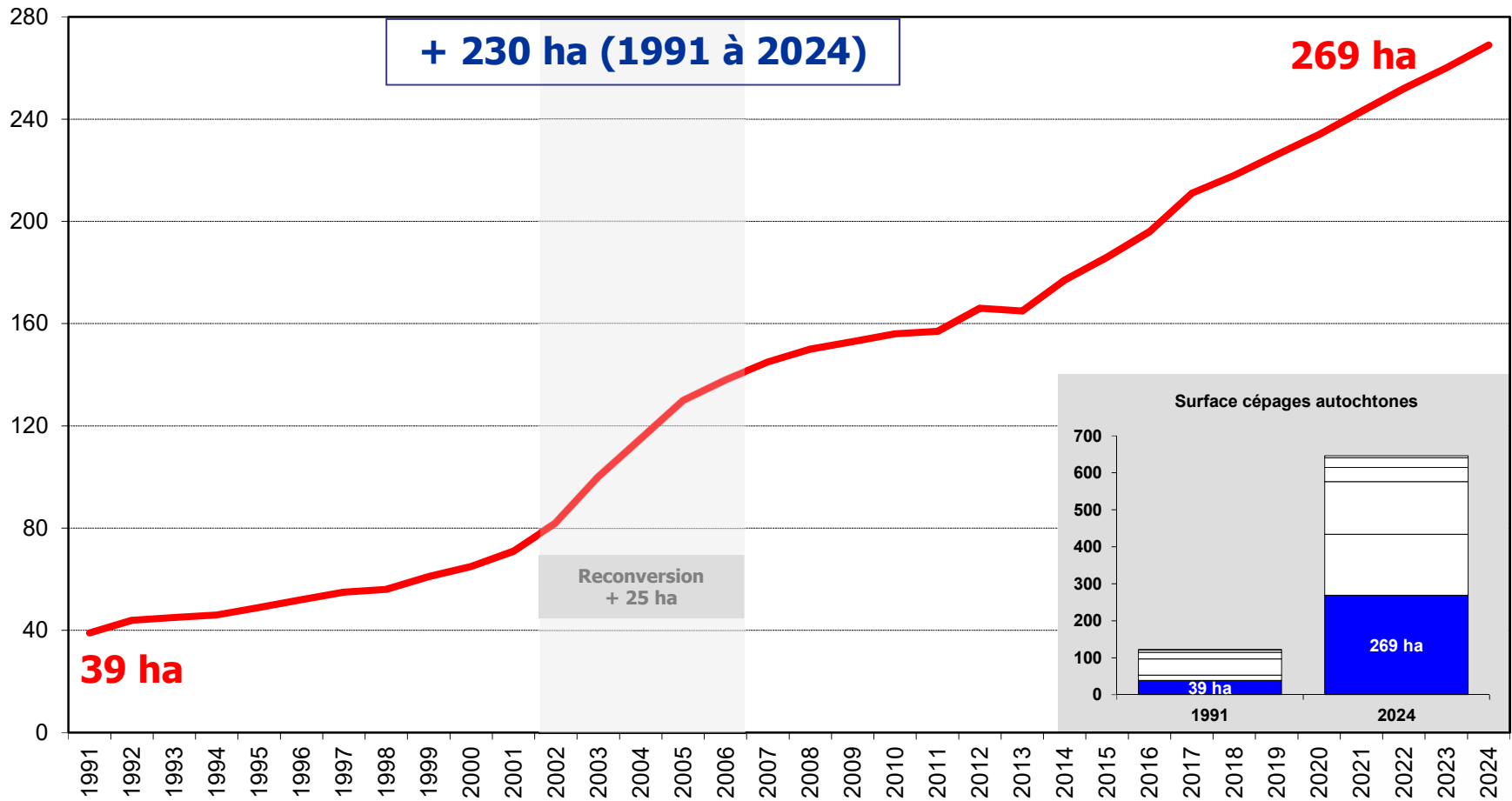
Structure d'âge du gamay



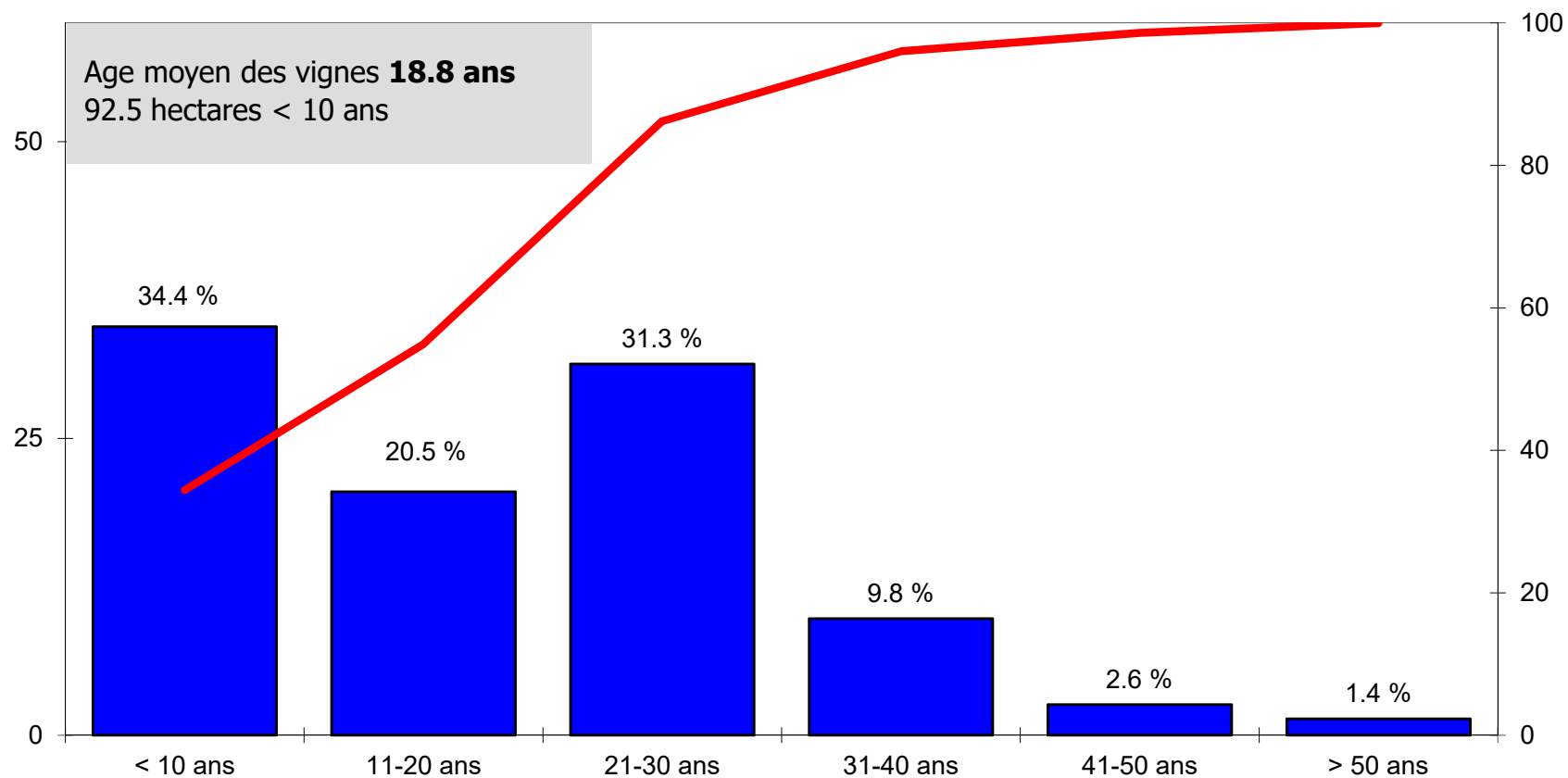
Résumé de l'évolution des trois principaux cépages (1991 – 2024)



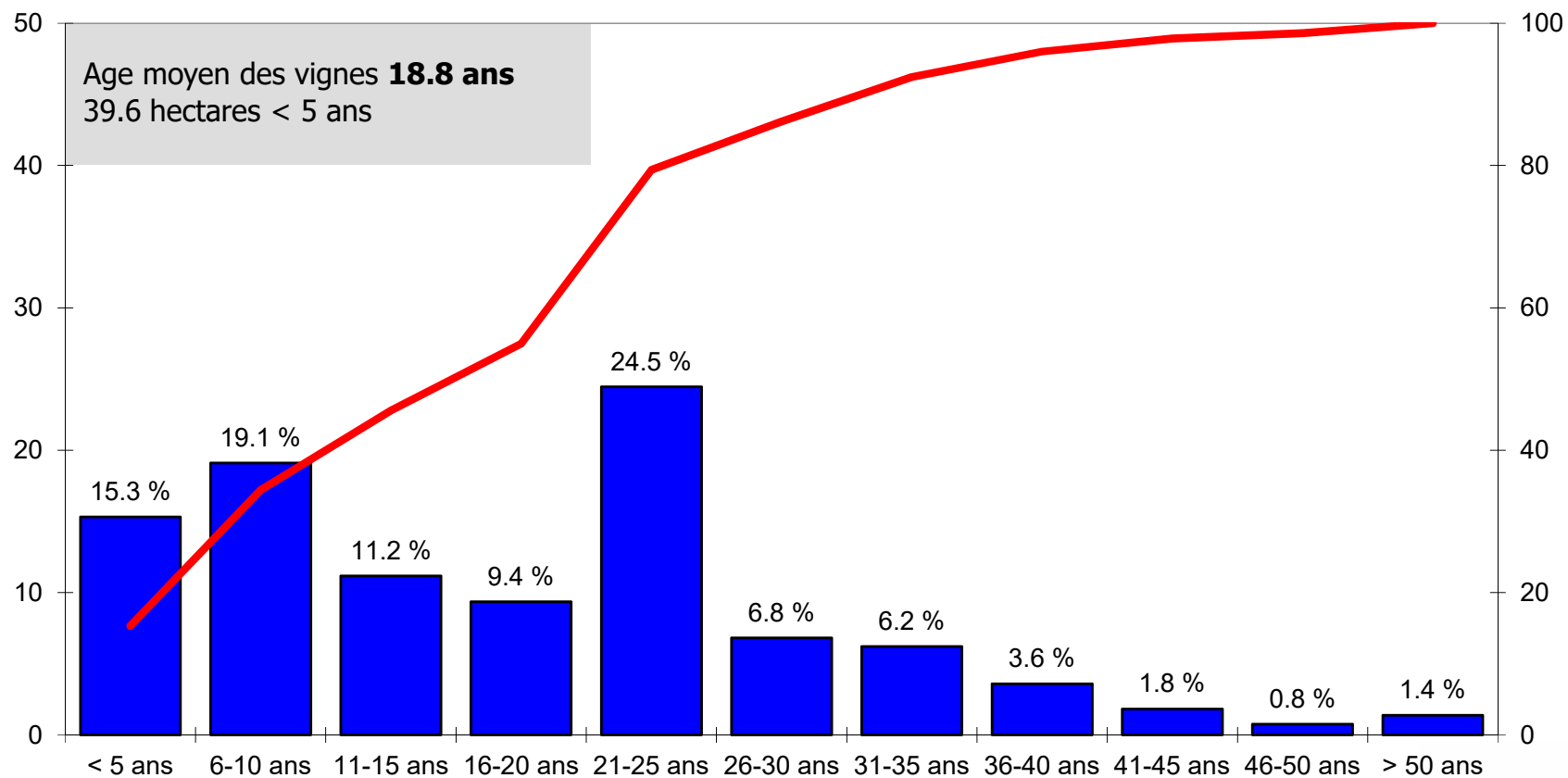
Evolution de la surface de petite arvine



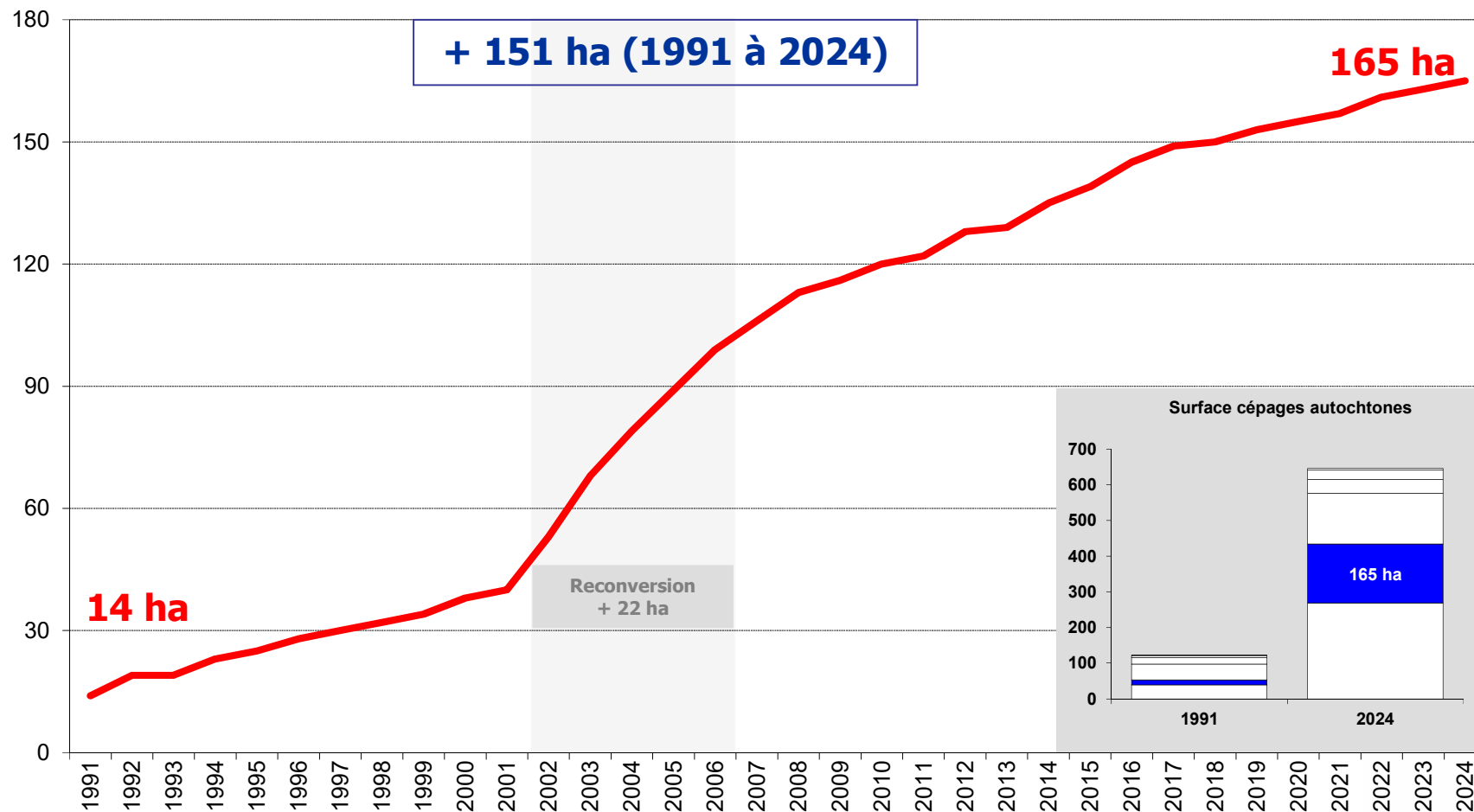
Structure d'âge de la petite arvine (par classe de 10 ans)



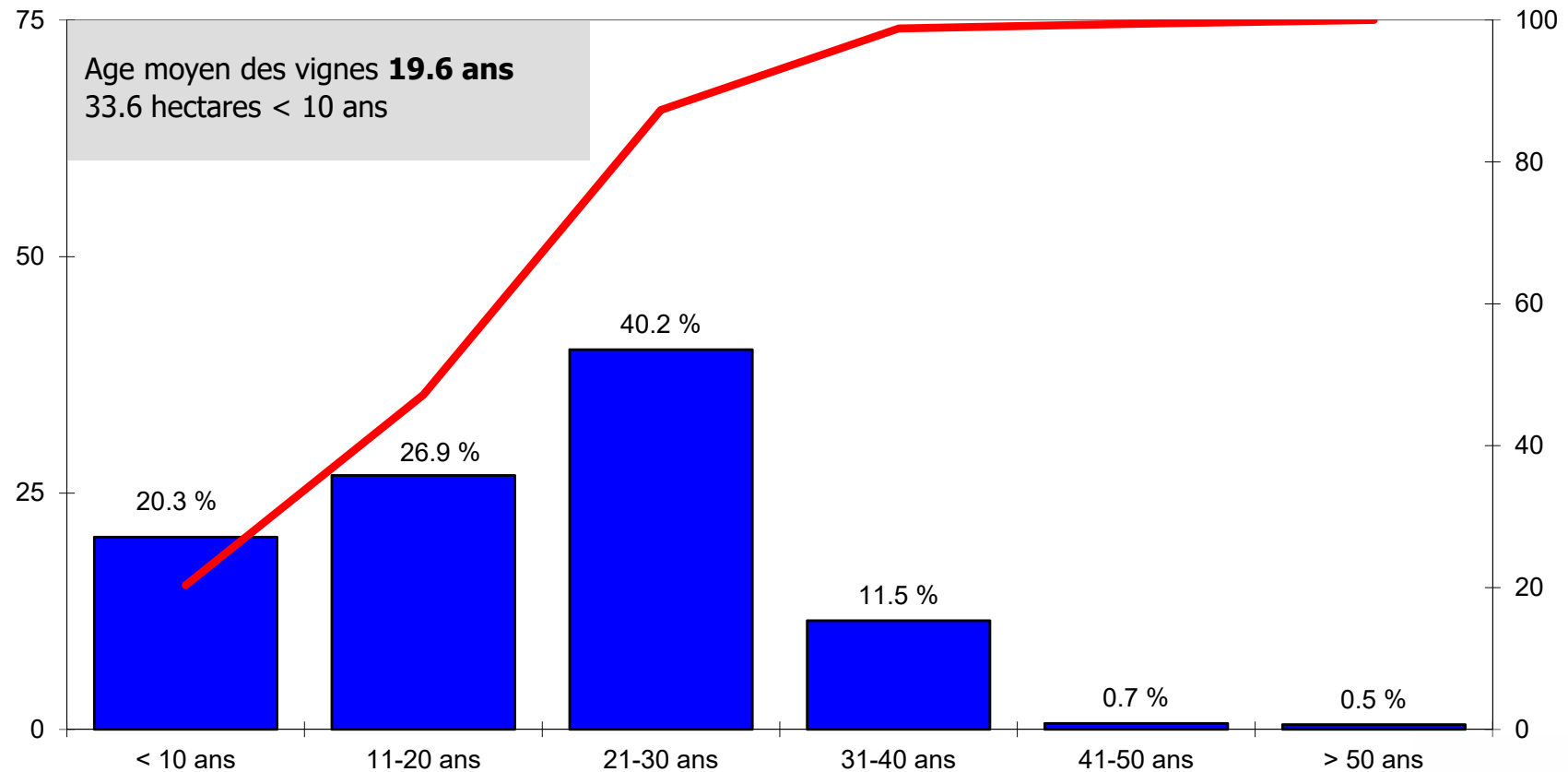
Structure d'âge de la petite arvine (par classe de 5 ans)



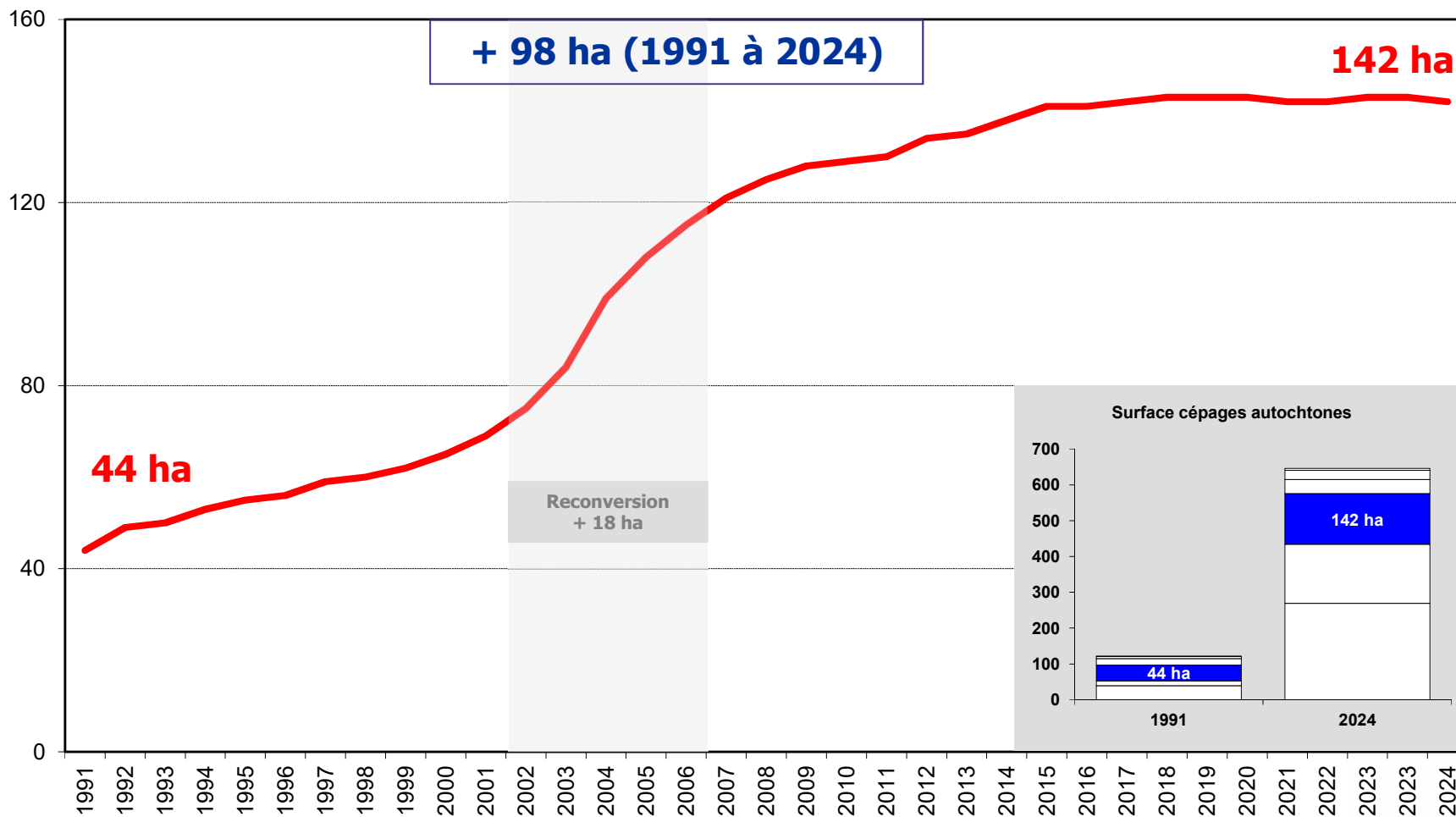
Evolution de la surface de cornalin



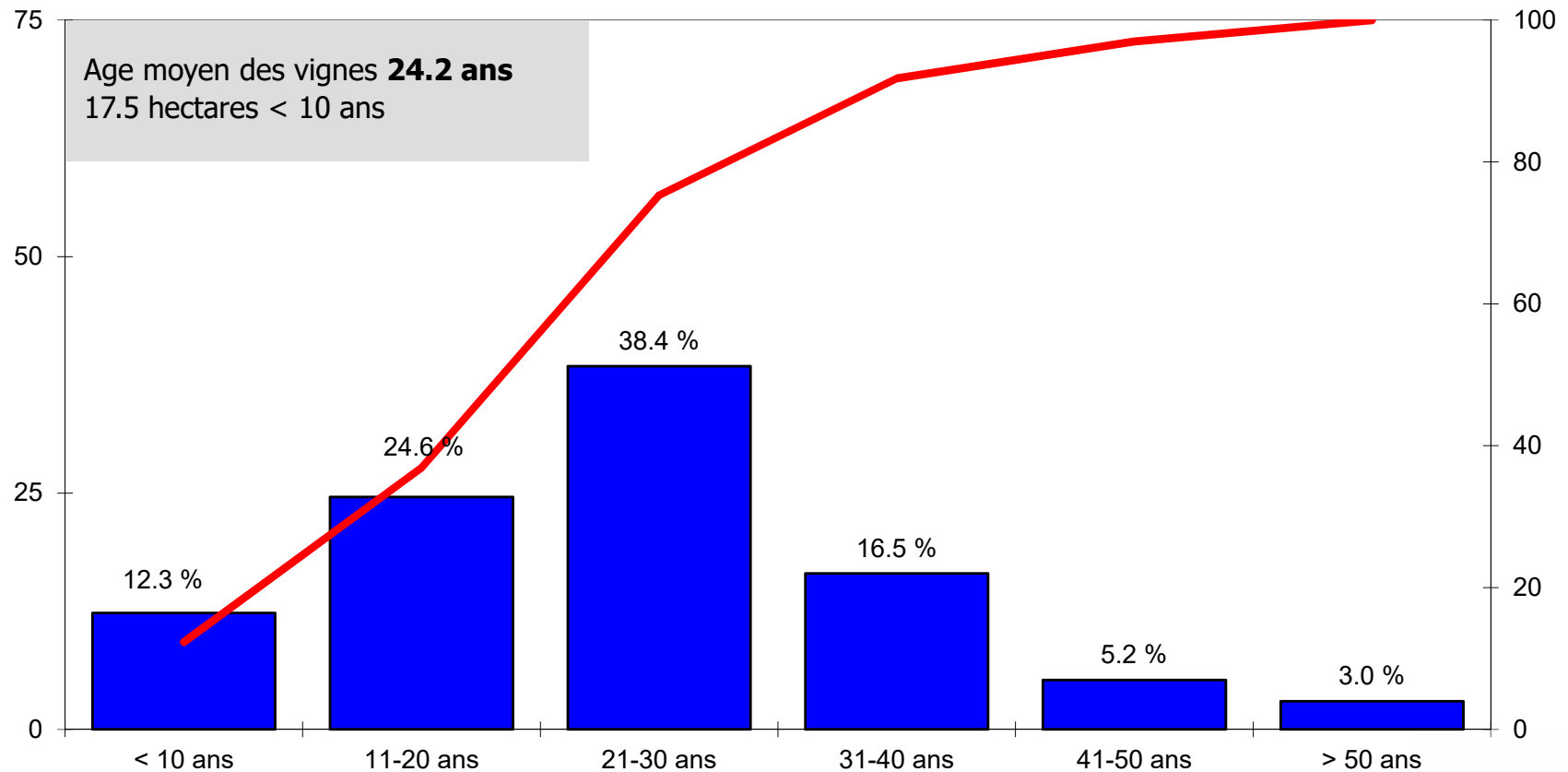
Structure d'âge du cornalin



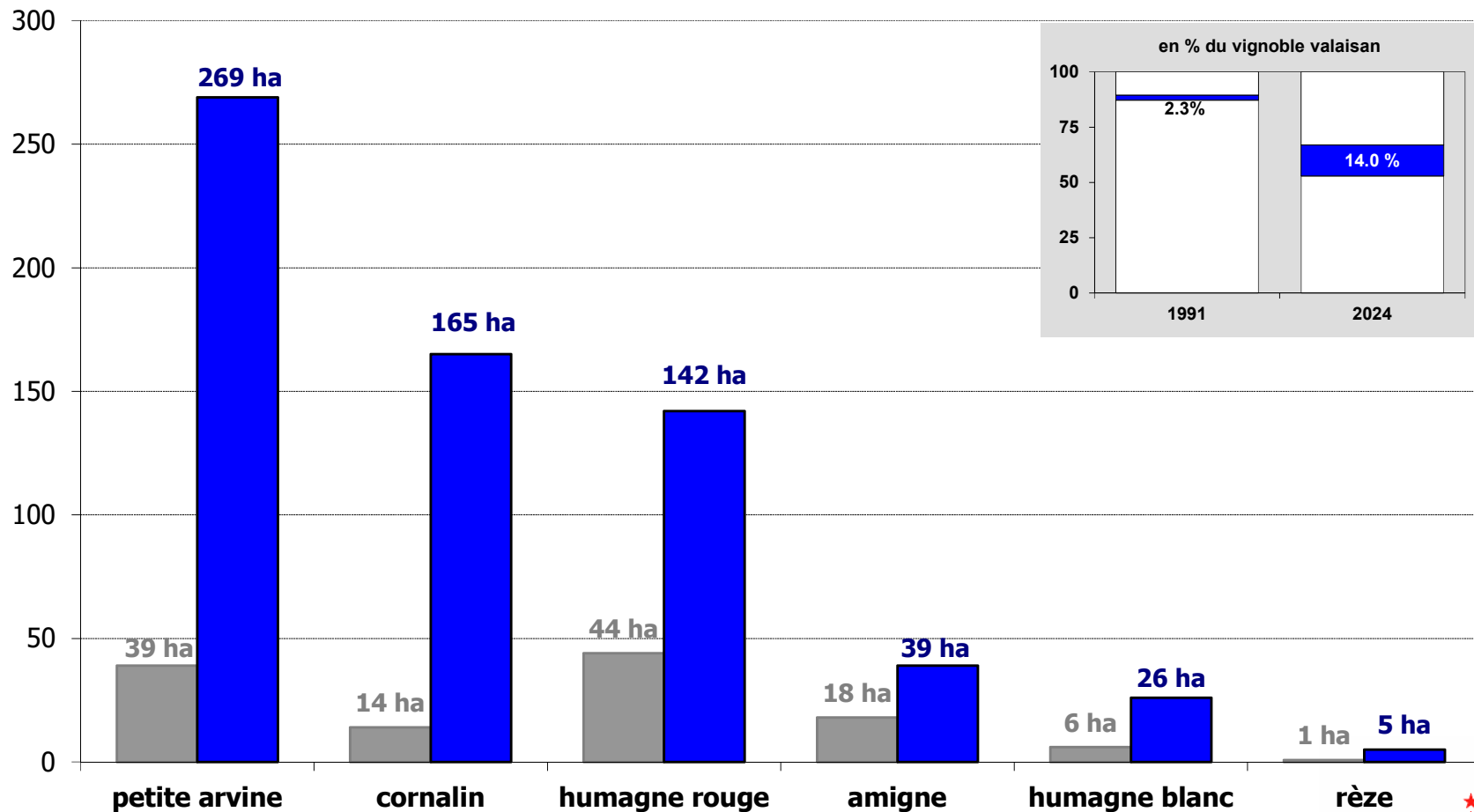
Evolution de la surface d'humagne rouge



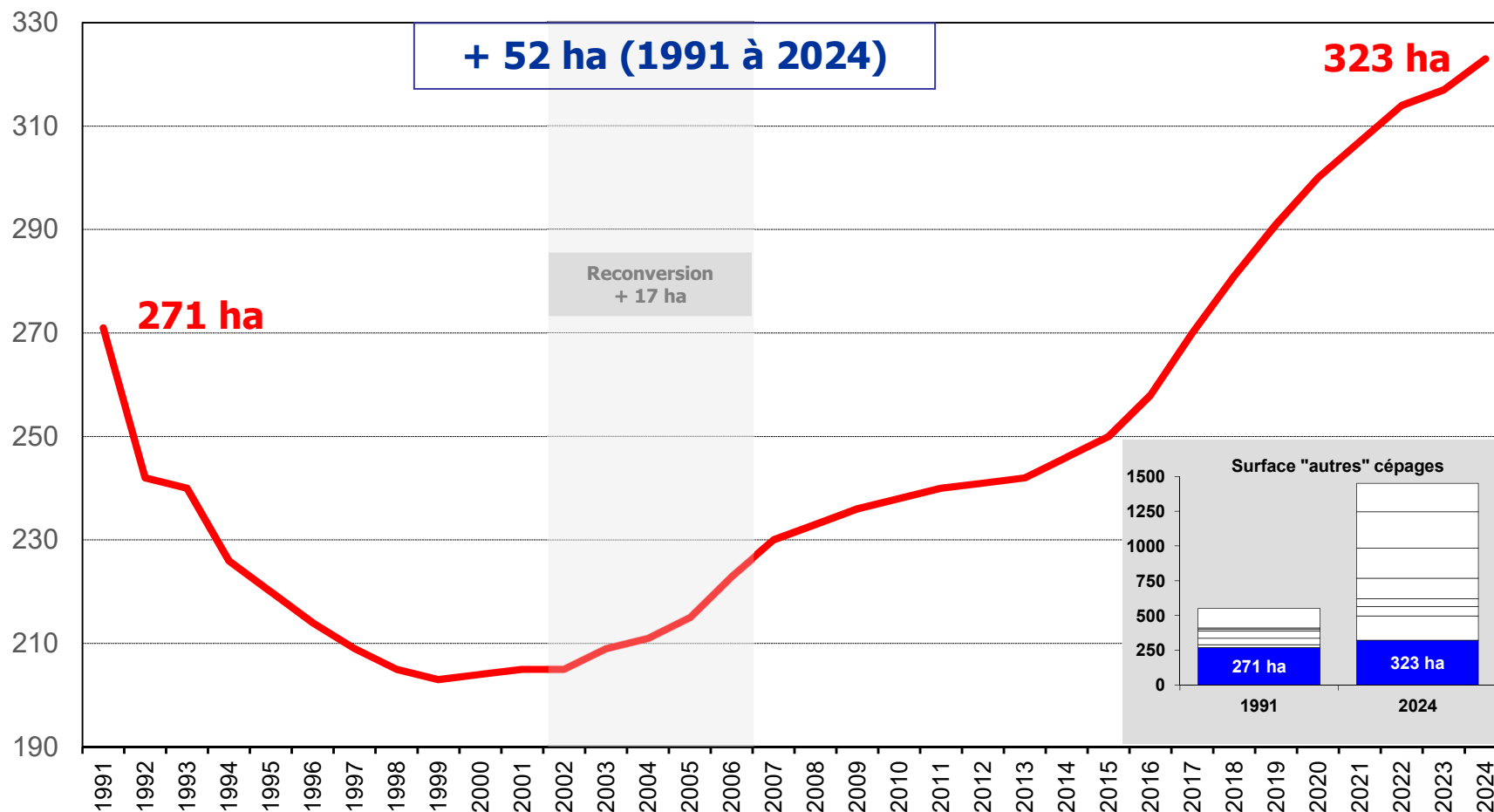
Structure d'âge de l'humagne rouge



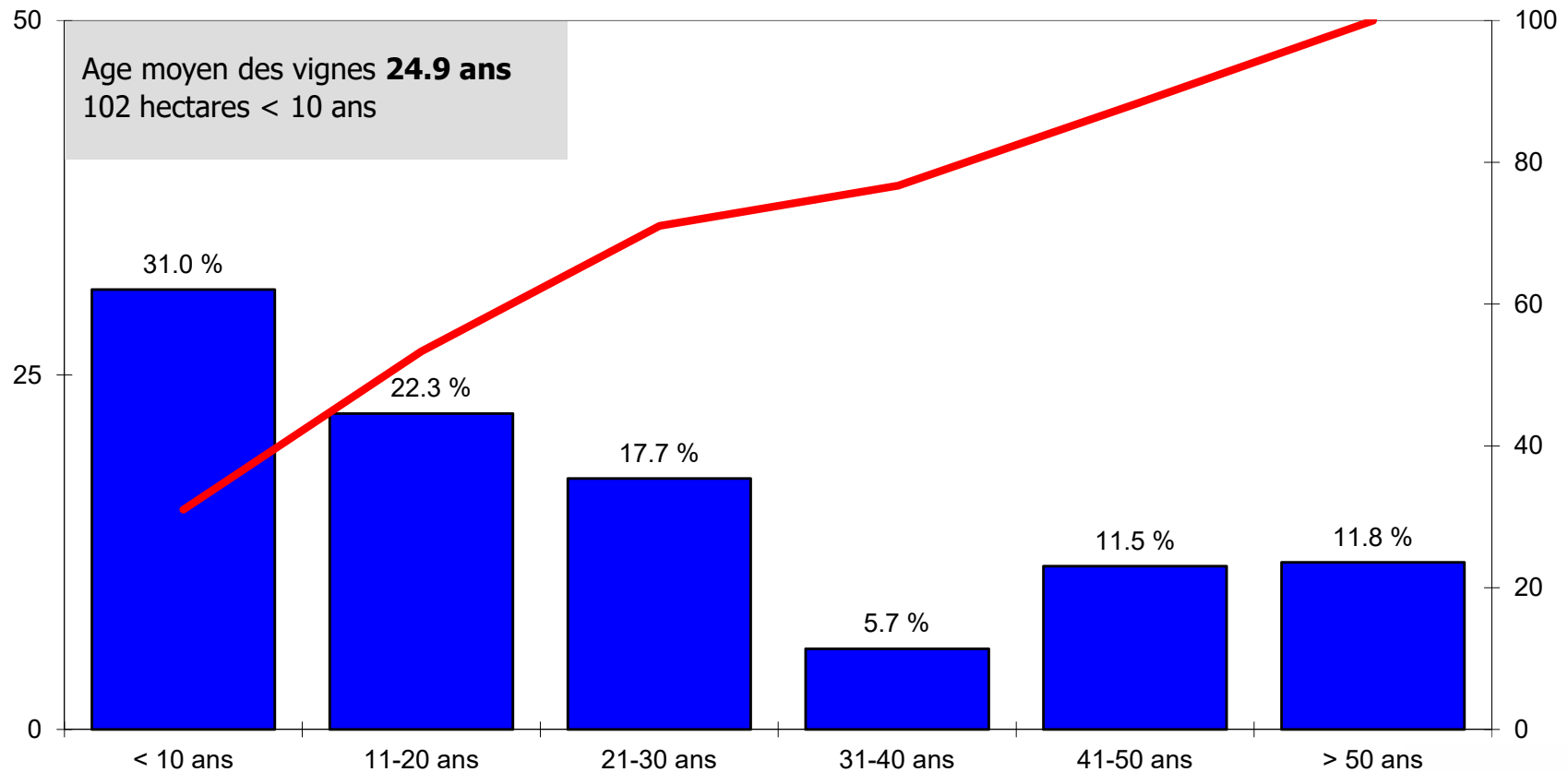
Résumé de l'évolution des cépages autochtones (1991 – 2024)



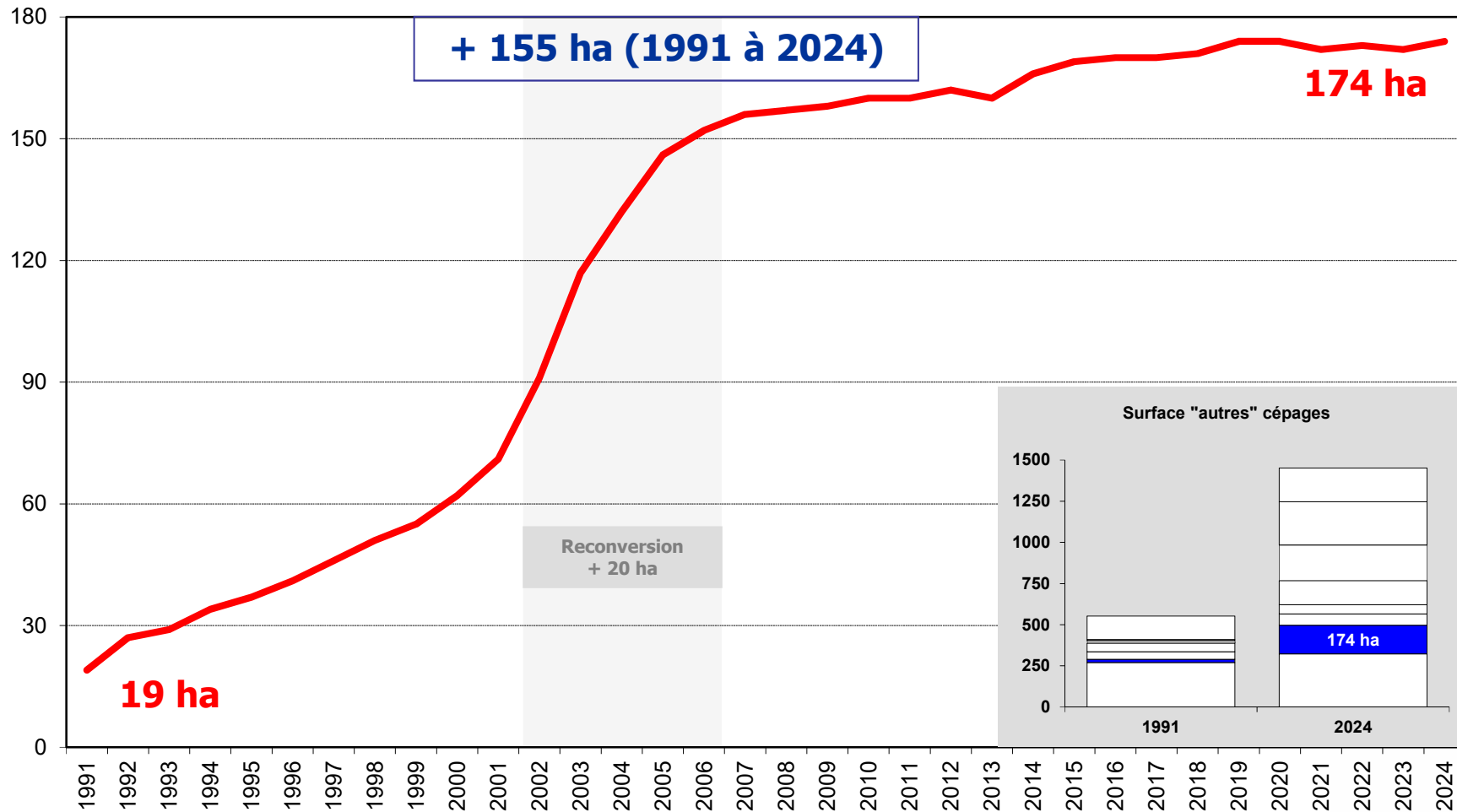
Evolution de la surface de sylvaner/rhin



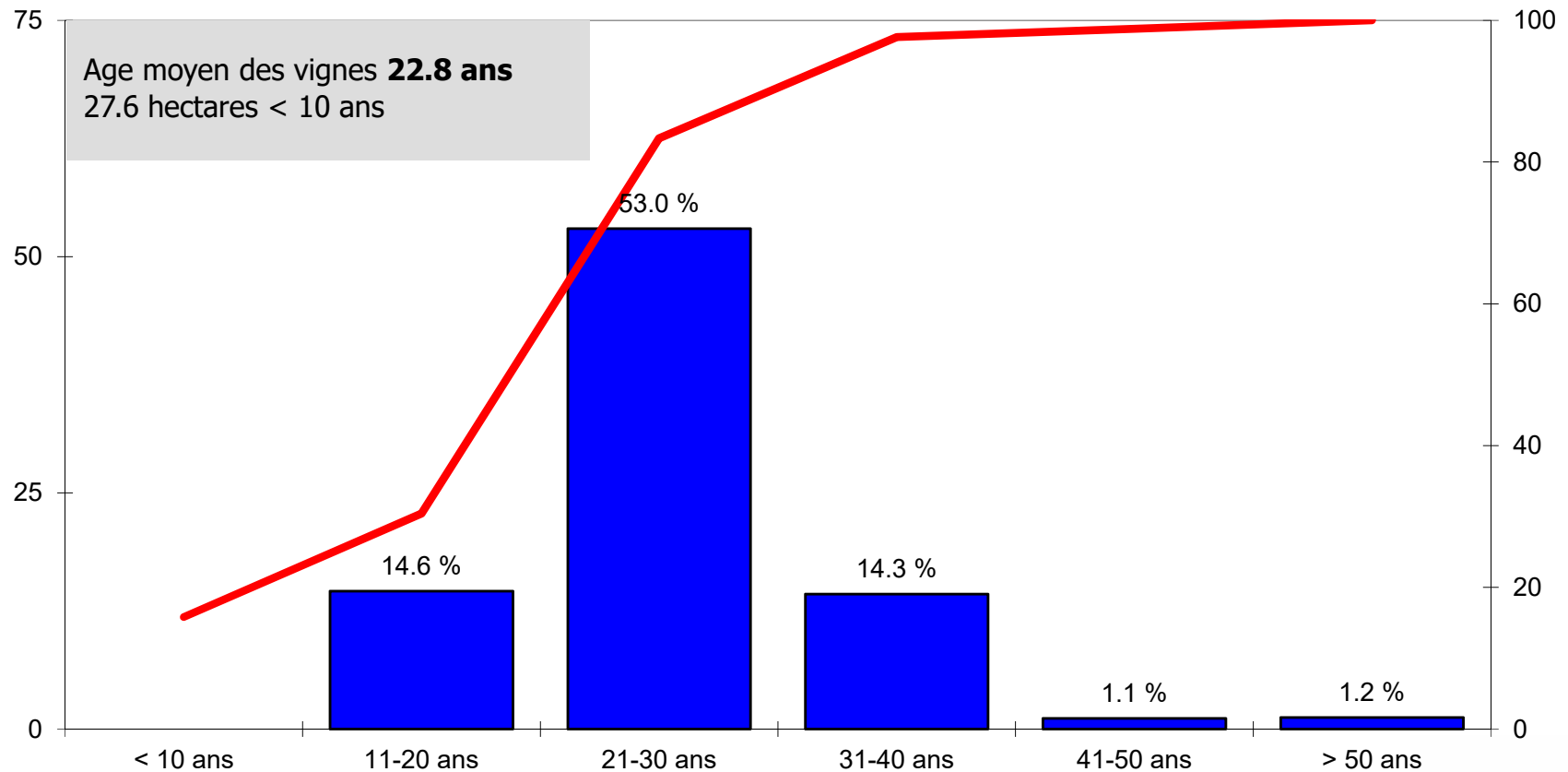
Structure d'âge du sylvaner/rhin



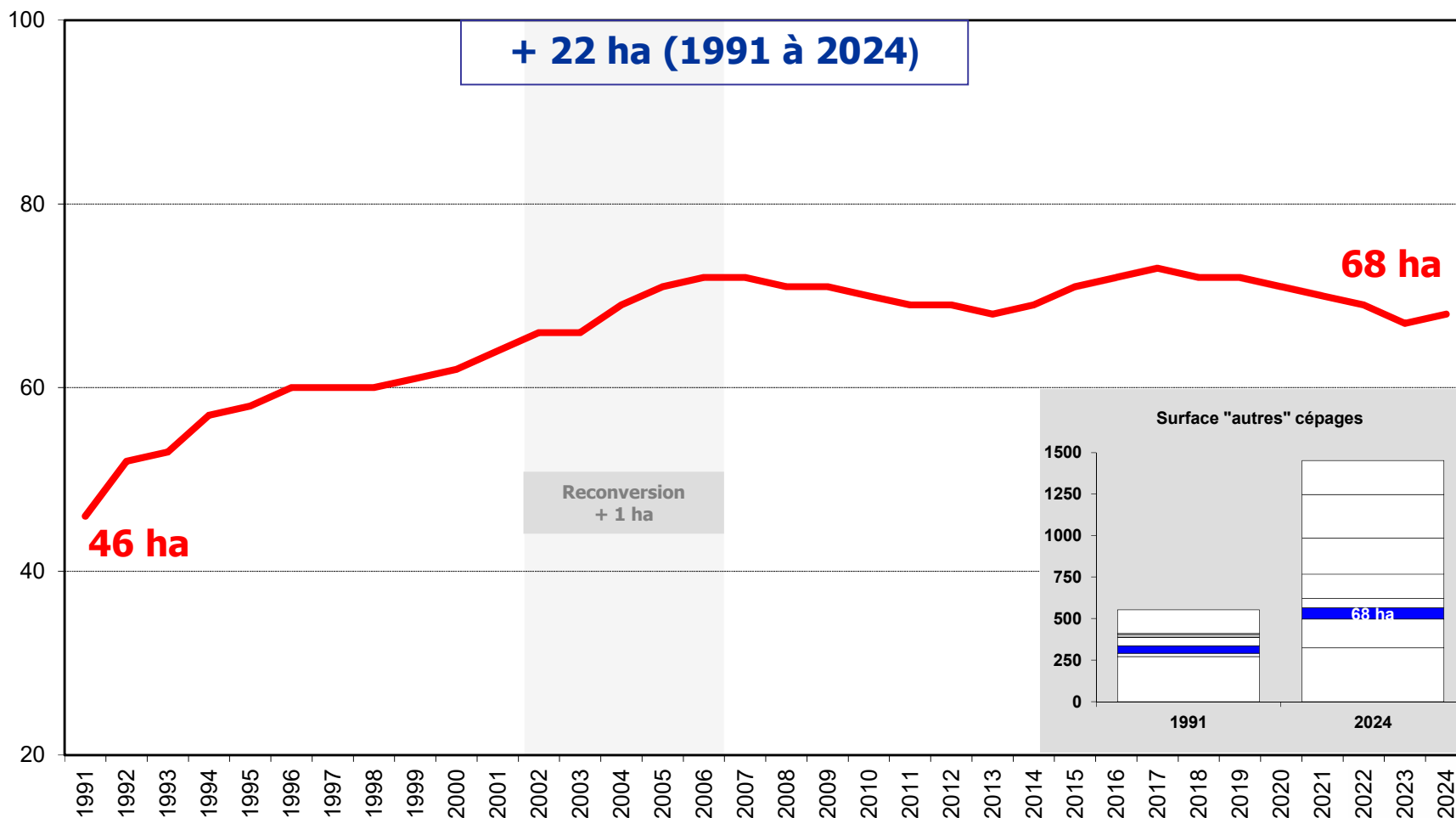
Evolution de la surface de syrah



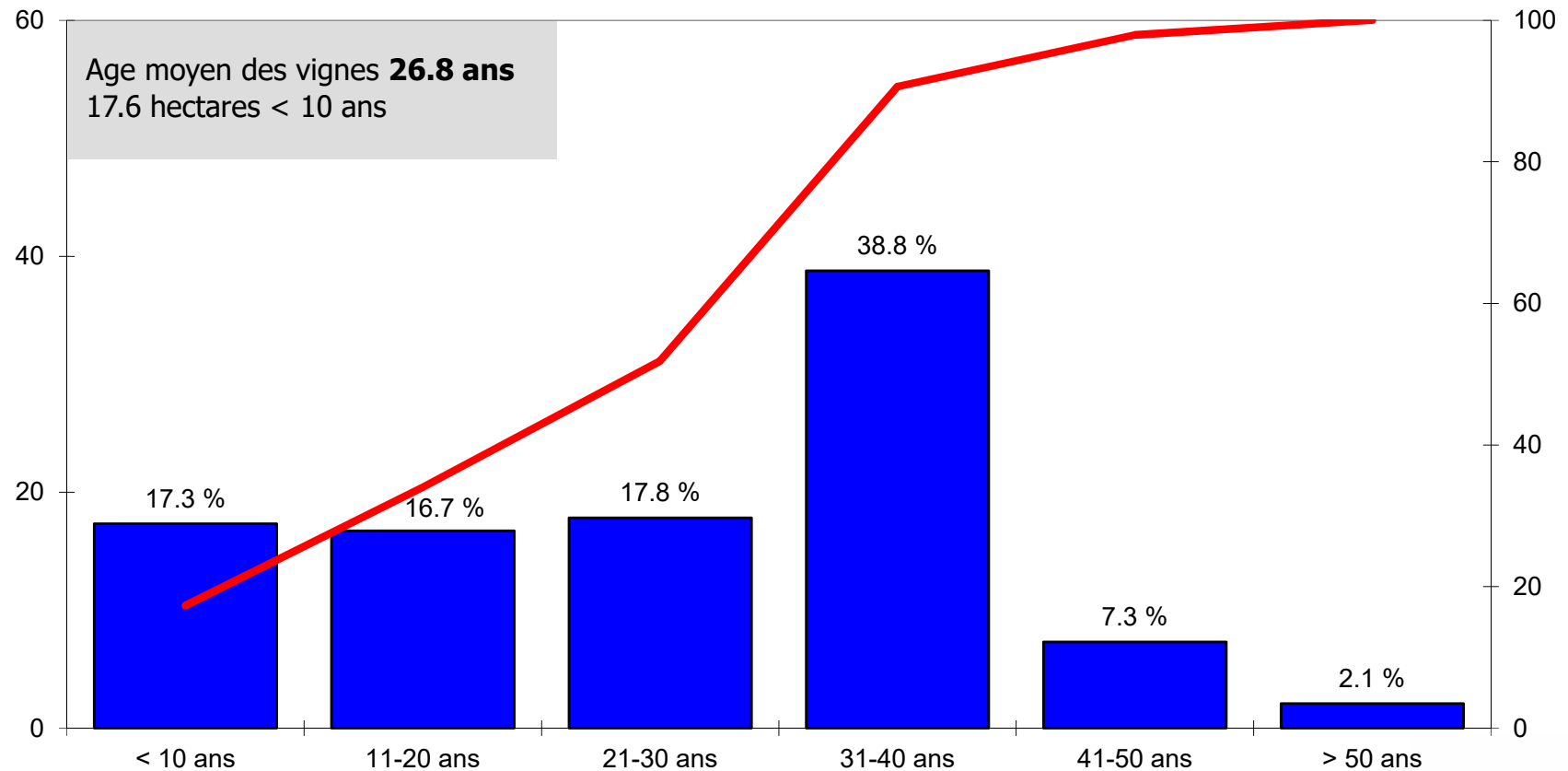
Structure d'âge de la syrah



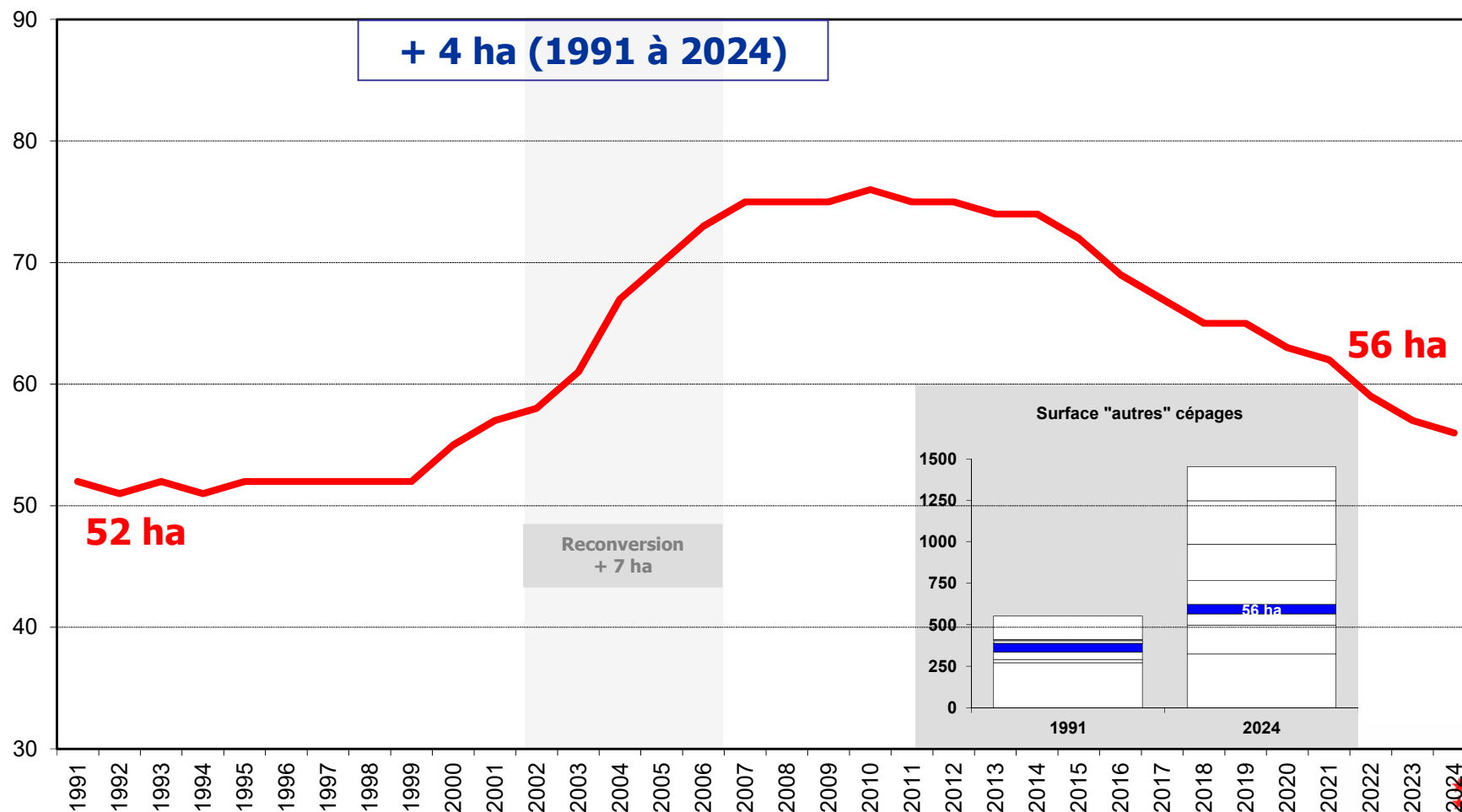
Evolution de la surface de chardonnay



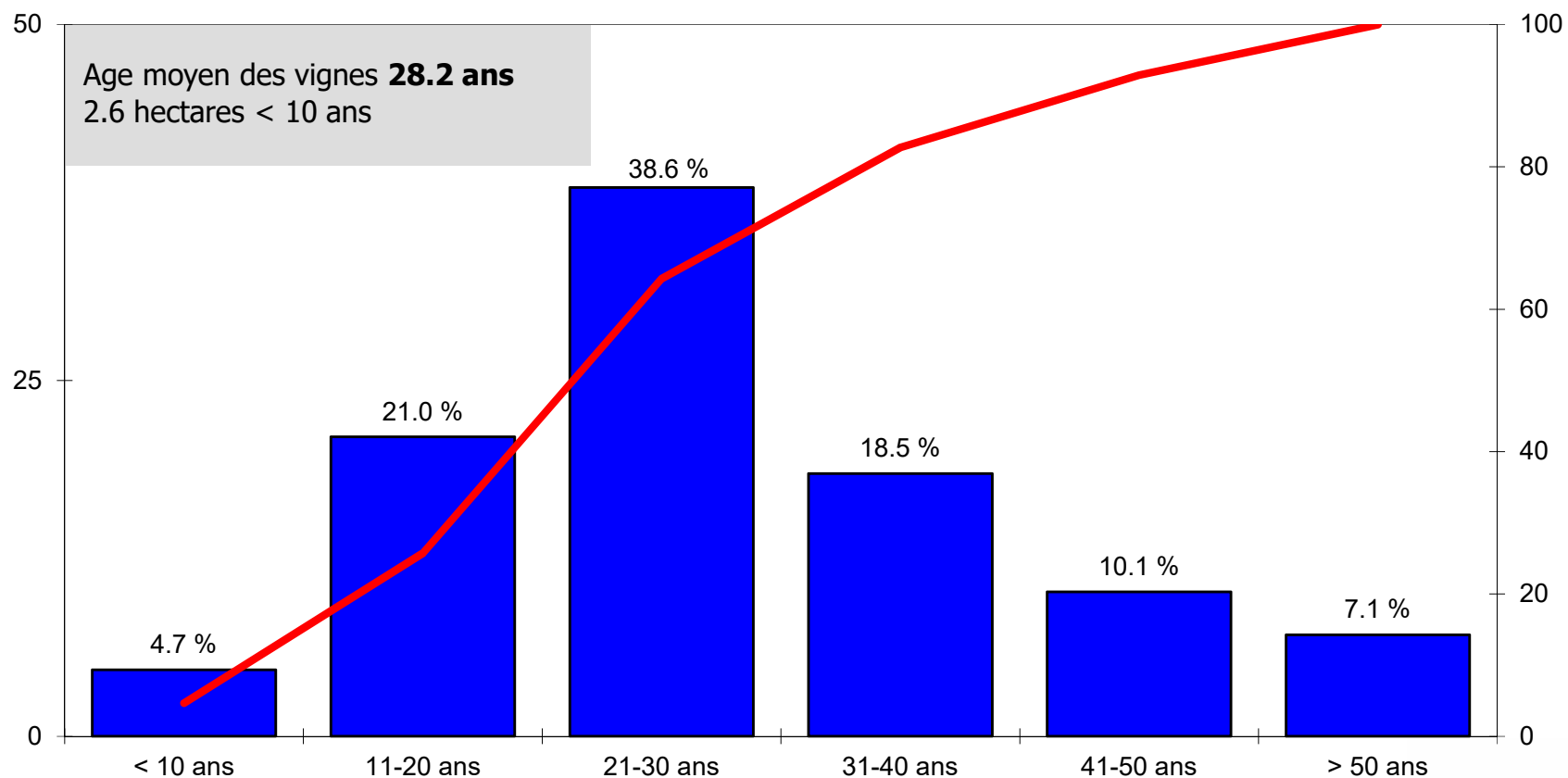
Structure d'âge du chardonnay



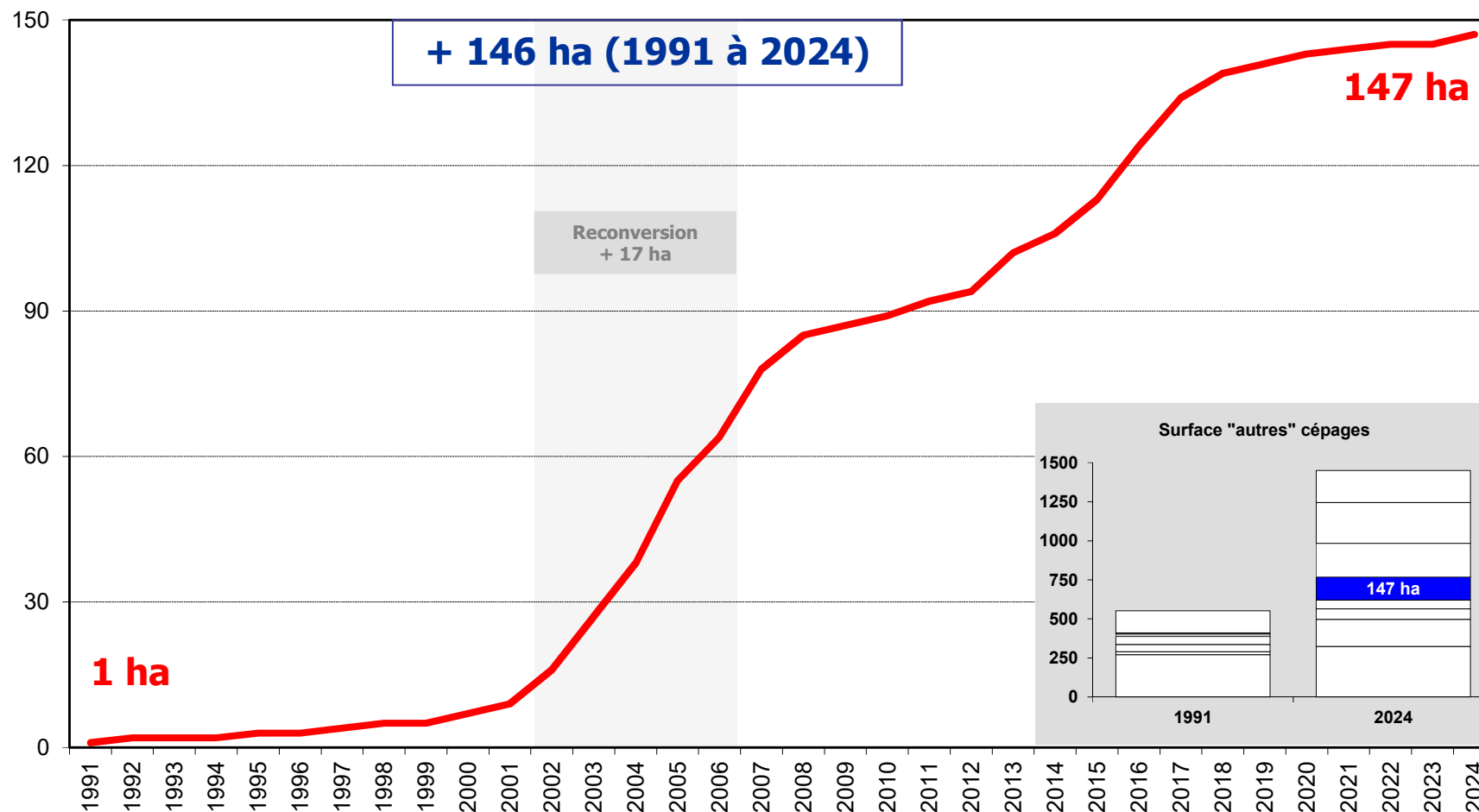
Evolution de la surface de pinot gris



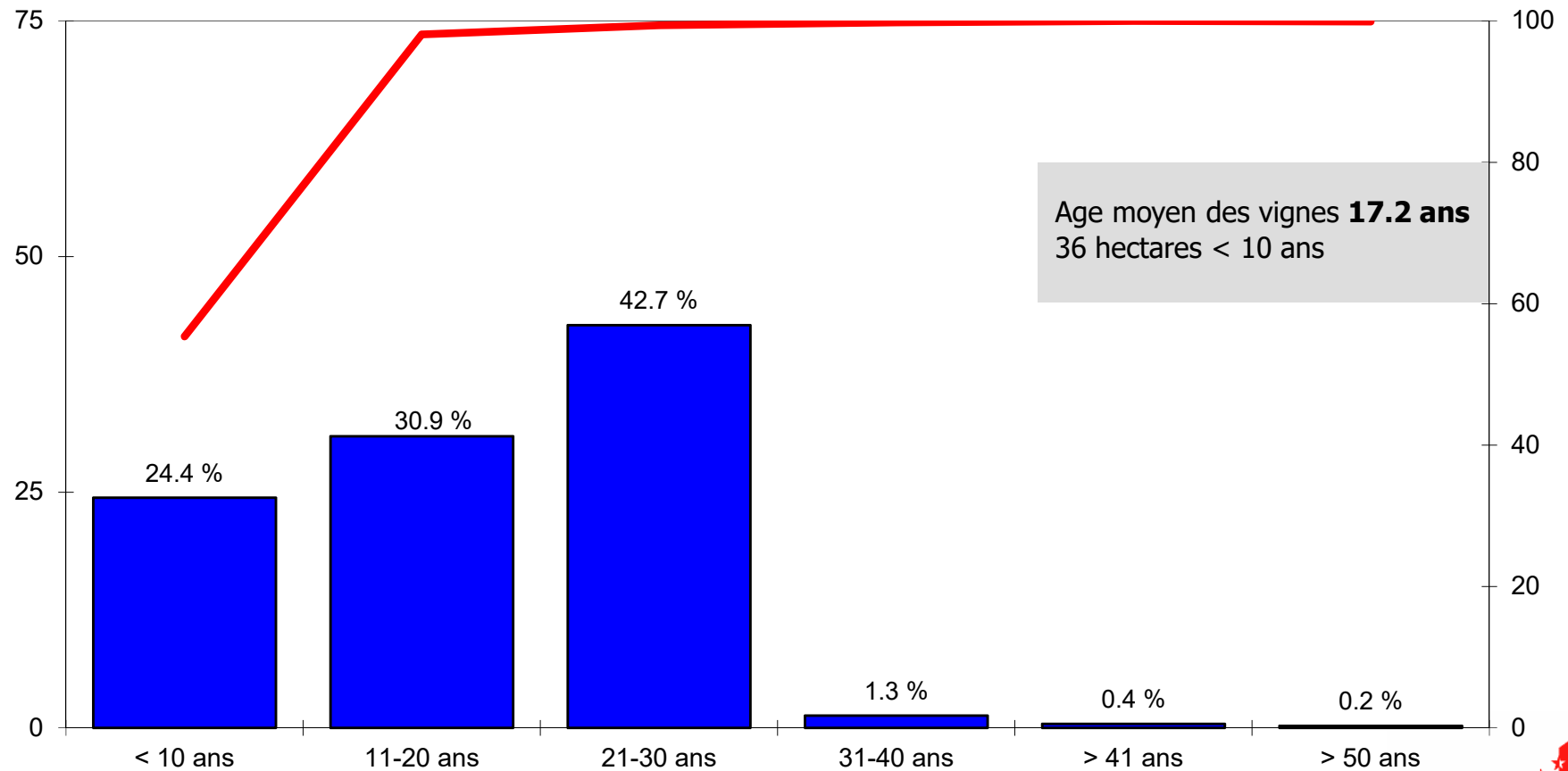
Structure d'âge du pinot gris



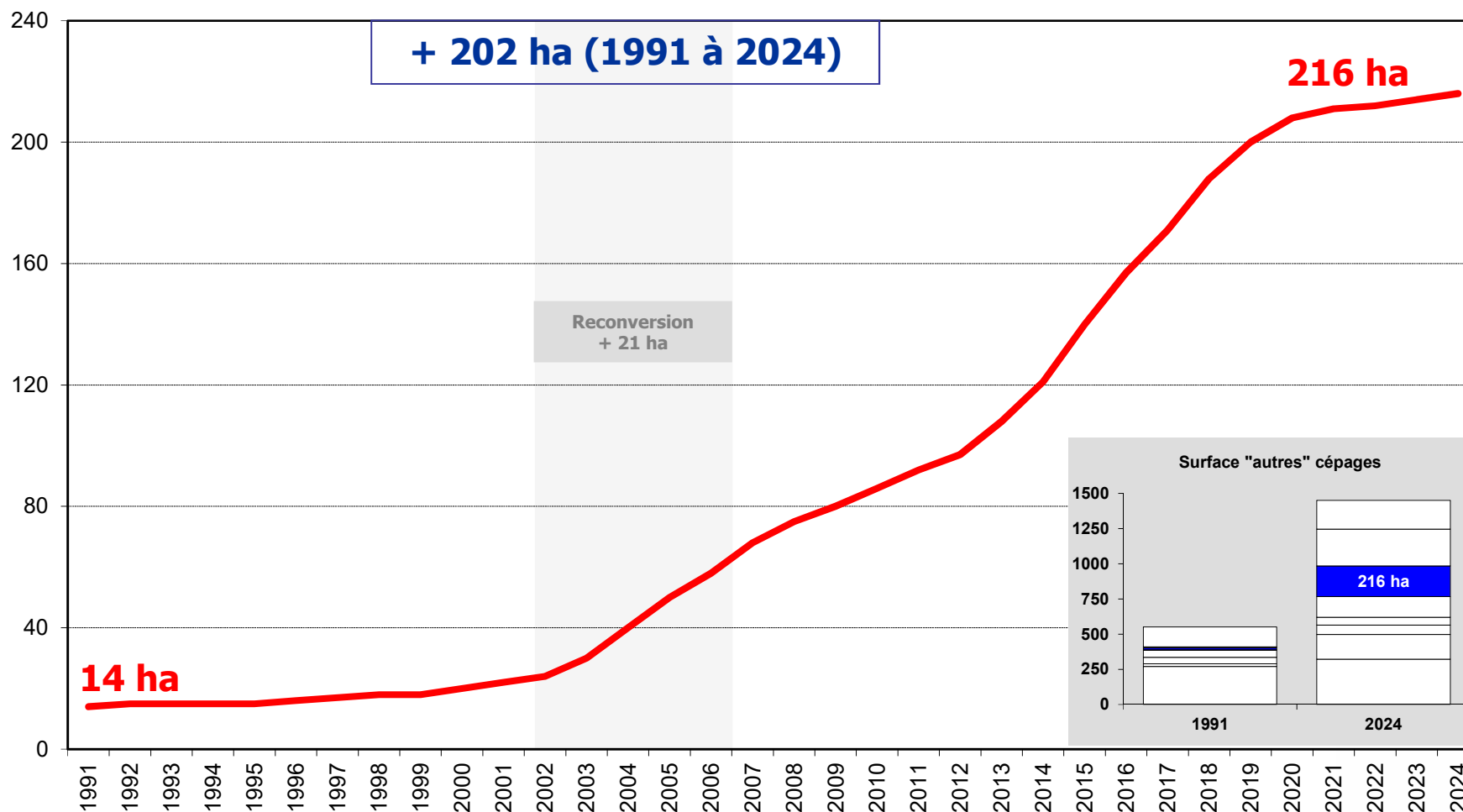
Evolution de la surface de merlot



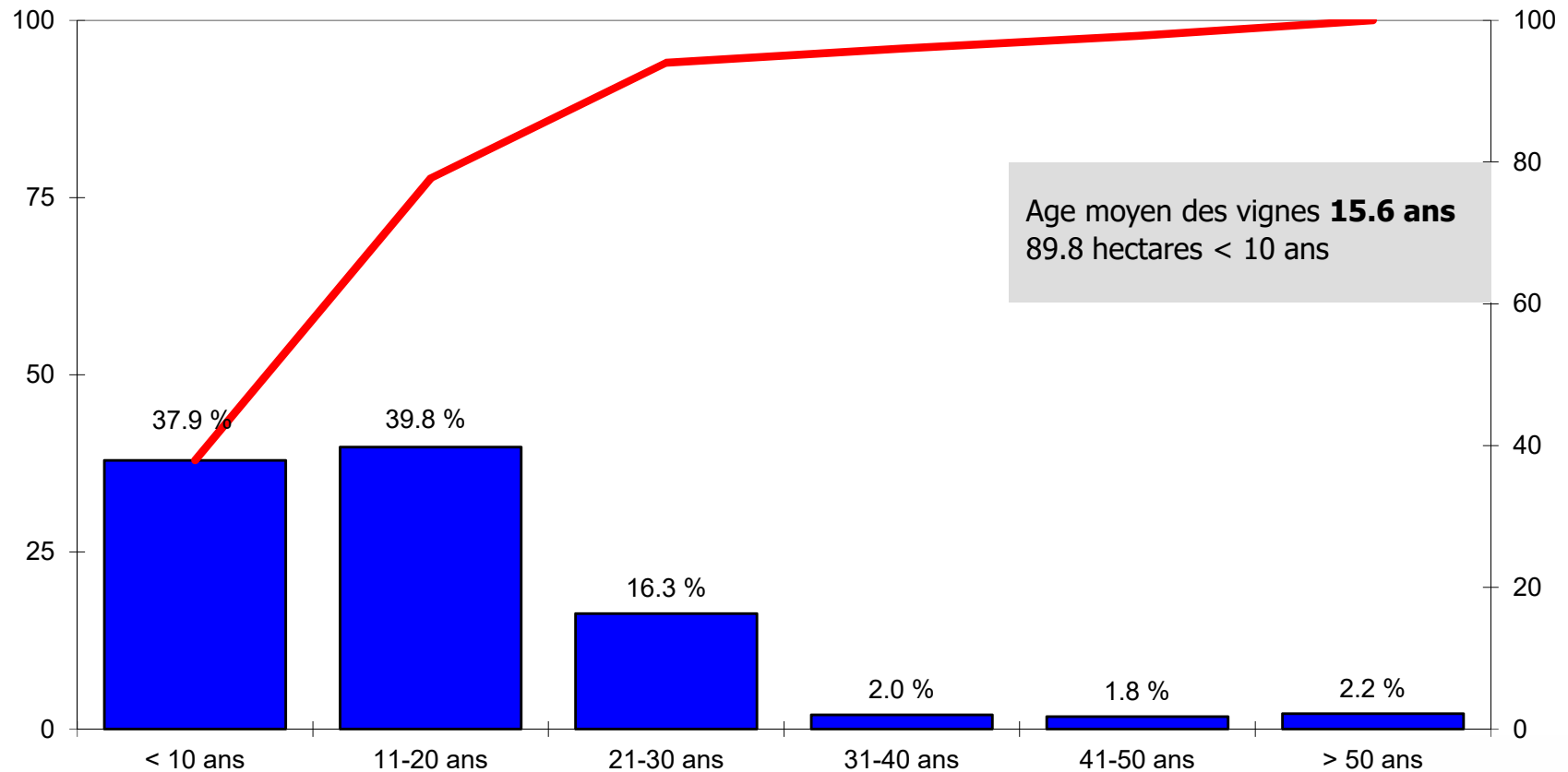
Structure d'âge du merlot



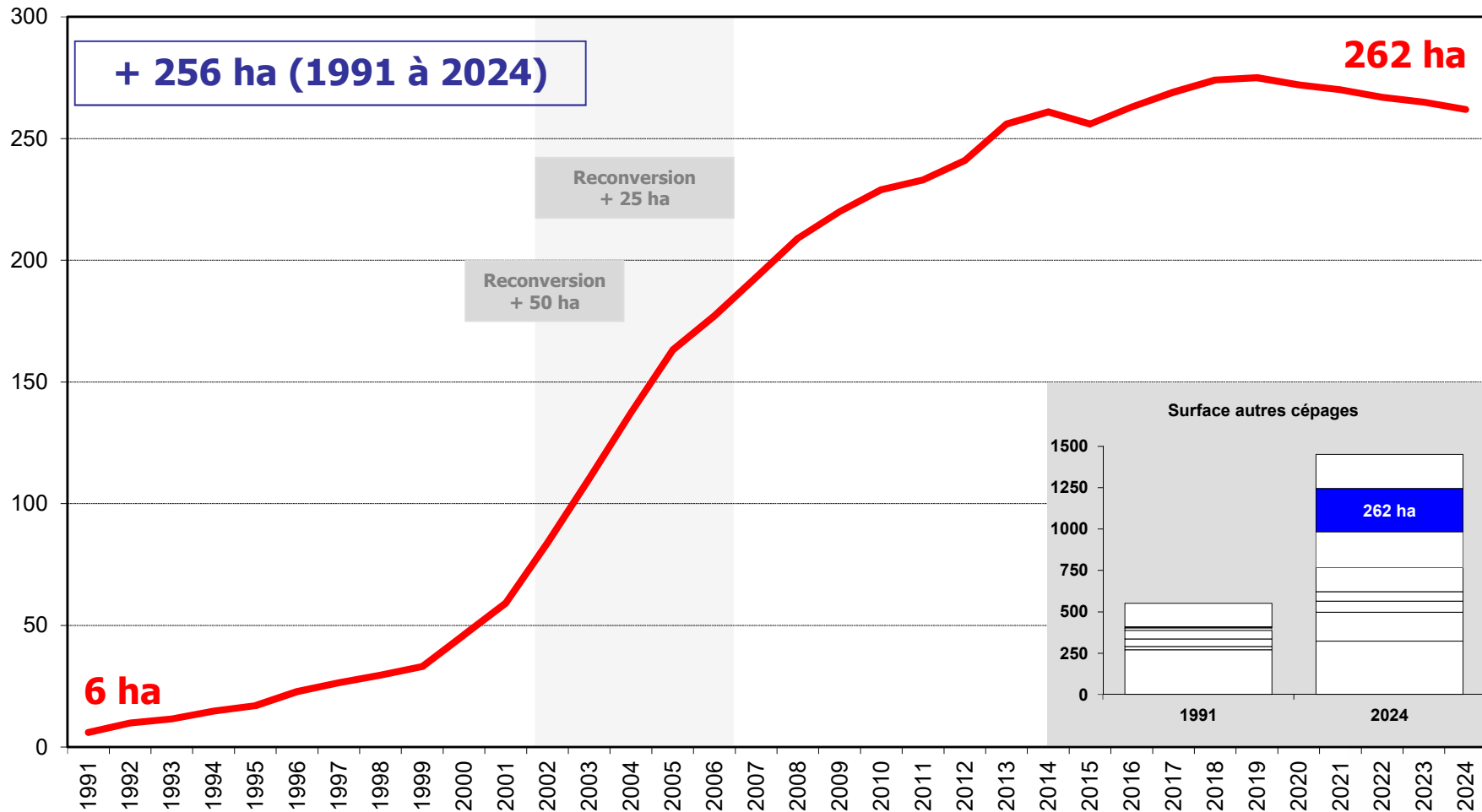
Evolution de la surface de savagnin blanc



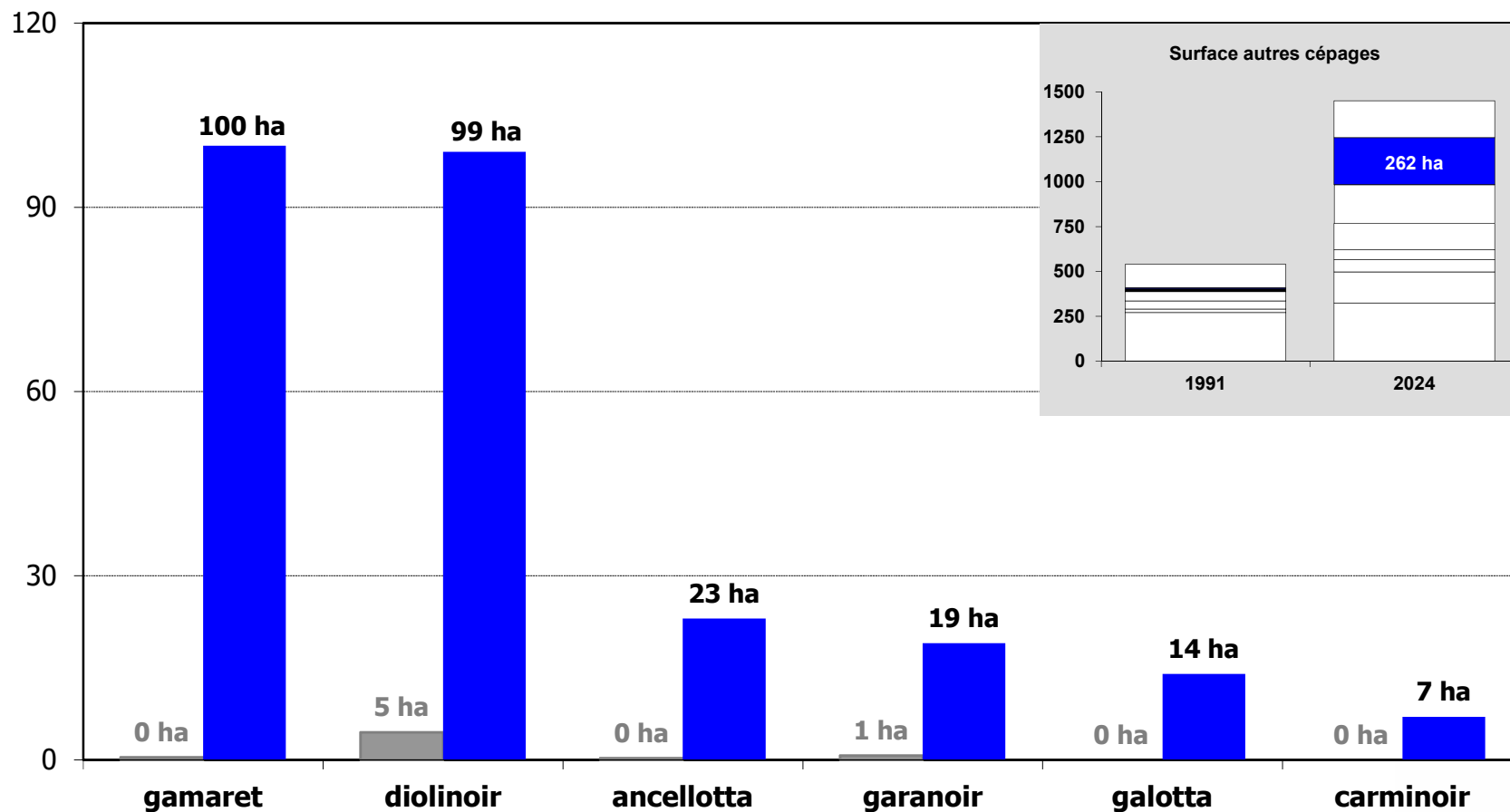
Structure d'âge du savagnin blanc



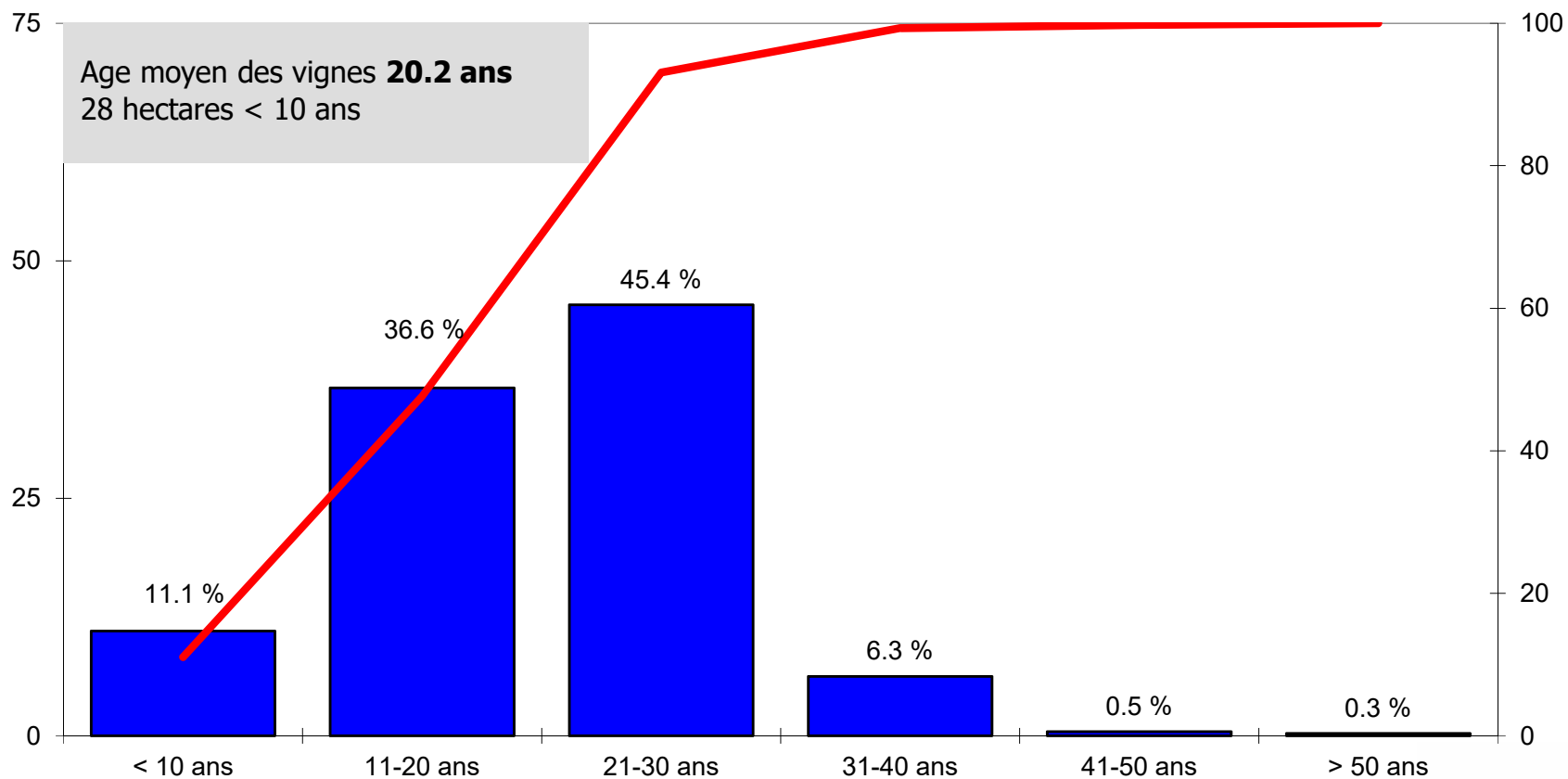
Evolution des surfaces des cépages dits « améliorateurs »



Résumé de l'évolution des cépages dits « améliorateurs » (1991 – 2024)



Structure d'âge des cépages dits « améliorateurs »



Résumé de l'évolution des « autres » cépages (1991 – 2024)

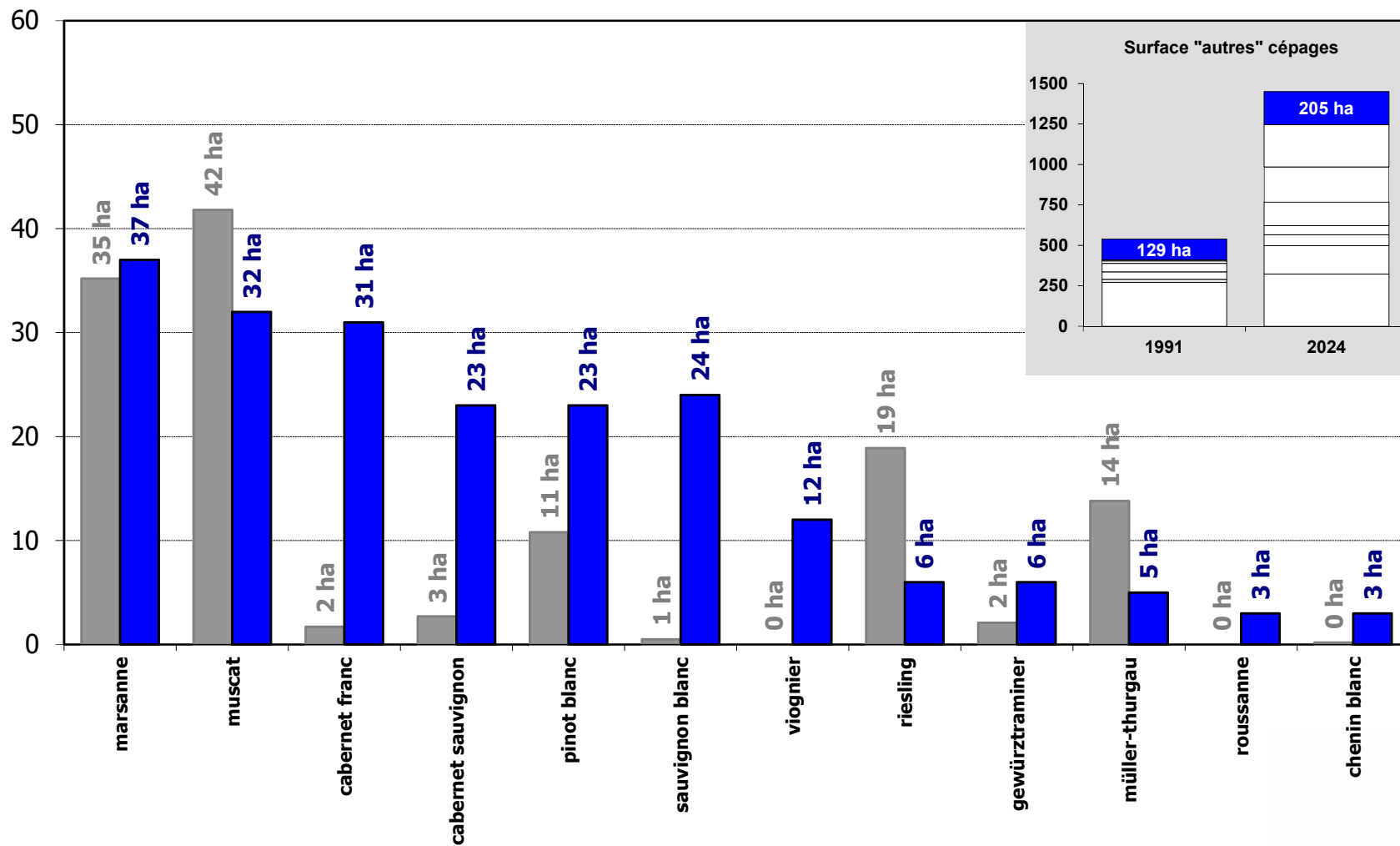


Tableau synoptique

	1991	2024	Δ	Surface	Age moyen	< 10 ans ha	< 10 ans %
chasselas	1'875	743	- 1'132	16.1%	40.1	74.0	10.0%
pinot noir	1'732	1'250	- 482	27.1%	35.9	80.0	6.4%
gamay	984	445	- 539	9.7%	38.7	30.0	6.7%
Total	4'591	2'438	- 2'153	52.9%	37.7	184.0	7.5%
sylvaner/rhin	271	323	52	7.0%	24.9	102.0	31.6%
pinot gris	52	56	4	1.2%	28.2	2.6	4.6%
chardonnay	46	68	22	1.5%	26.8	17.6	25.9%
humagne rouge	44	142	98	3.1%	24.2	17.5	12.3%
petite arvine	39	269	230	5.8%	18.8	92.5	34.4%
syrah	19	174	155	3.8%	22.8	27.6	15.9%
cornalin	14	165	151	3.6%	19.6	33.6	20.4%
savagnin blanc	14	216	202	4.7%	15.6	89.8	41.6%
merlot	1	147	146	3.2%	17.2	36.0	24.5%
« améliorateurs »	6	262	256	5.7%	20.2	28.0	10.7%
différence	169	349	180	7.5%	22.6	53.1	15.2%
Total	675	2'171	1'496	47.1%	22.7	501.0	23.0%
Total vignoble	5'266	4'609	- 657	100.0%	30.2	685.0	14.8%